

LEA Name : Union SD
Address : 354 Baker Street, Ste 2
Rimersburg , PA 16248

County : Clarion
AUN Number : 106169003
LEA Type : SD

Annual Financial Report Accuracy Certification Statement

For Fiscal Year Ending
6/30/2019

Pennsylvania Department of Education
&
Office of Comptroller Operations

PDE-2056: Intermediate Unit

PDE-2057: School District, AVTS/CTC, Charter School,
and Special Program Jointure

CERTIFICATION: By signing this page I agree that the electronic data submitted is a complete and accurate statement of the financial operations and status of the local education agency for the fiscal year. It has been prepared in accordance with generally accepted accounting principles and established Commonwealth of PA reporting guidelines.



Chief School Administrator Signature

10-21-19

Date



Board Secretary Signature

10/21/19

Date

Megan Hepler

Contact Person

heplerml@unionsd.net

Contact Person E-mail Address

(814)473-6311

Ext :0

Contact Person Telephone Number

(814)473-8201

Contact Person Fax Number

Audit Certification
Annual Financial Report:
 For Fiscal Year Ending **6/30/2019**
(Pursuant to PA School Code Section 218(b))

LEA Name : Union SD
 AUN Number : 106169003
 County : Clarion

Audit Certification Due:
 12/31/2019

This certification is applicable to the Annual Financial Report data submitted through the Consolidated Financial Reporting System on: _____
Date

Auditing Firm:

CERTIFICATION: By signing this page I agree that the financial statements of the school have been properly audited as noted above pursuant to Article XXIV, and in the auditor's professional opinion, the Annual Financial Report (PDE-2057) submitted on the date referenced is materially consistent with the audited financial statements.

Chief School Administrator

Board Secretary

 Signature

 Date

 Signature

 Date

Megan Hepler

(814)473-6311 Ext :0

 Contact Person

 Contact Person Telephone Number

heplerml@unionsd.net

(814)473-8201

 Contact Person E-mail Address

 Contact Person Fax Number

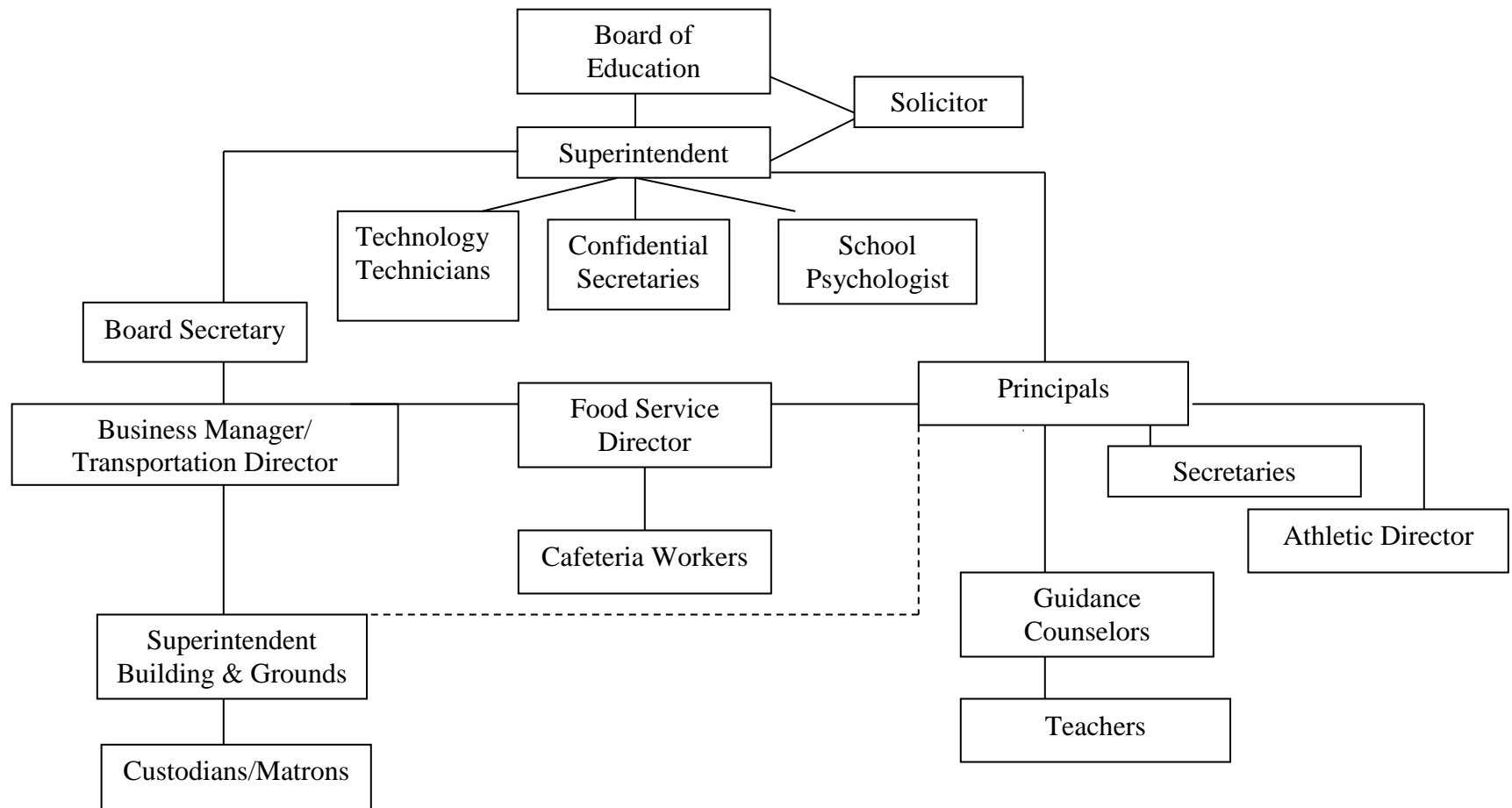
UNION SCHOOL DISTRICT

SECTION: LOCAL BOARD PROCEDURES

TITLE: ORGANIZATION CHART

ADOPTED: September 16, 1999

REVISED: February 16, 2006
May 3, 2018



<u>Val Number</u>	<u>Description</u>	<u>Justification</u>
41162	<p>Expenditure Detail, Salaries (Object 100) and Benefits (Object 200 series): Amounts must be entered for both Salaries and Benefits.</p> <p>Please verify following fund and function codes: Fund 10 Function 2350;</p>	Fund 10 Function 2350: Based on contractual agreement.

Amounts Expressed in Whole Dollars	<u>General Fund</u> <u>(10)</u>	<u>Public Purpose Trust</u> <u>(27)</u>	<u>Other Compt Approved</u> <u>(28)</u>	<u>Athletic / Activity</u> <u>(29)</u>	<u>Capital Reserve (690.</u> <u>1850)</u> <u>(31)</u>
Assets And Deferred Outflows Of Resources					
Assets					
0100 Cash and Cash Equivalents	321,595				
0110 Investments	7,551,312				
0120 Taxes Receivable	179,559				
0130 Due From Other Funds					
0141 Due From Other Governments	92,303				
0142 State Revenue Receivable					
0143 Federal Revenue Receivable					
0145 Other Intergovernmental Revenue Receivable					
0146 Due from Primary Government					
0147 Due from Component Unit					
0150 Other Receivables					
0170 Inventories	32,000				
0180 Prepaid Expenses (Expenditures)					
0190 Other Current Assets					
Total Assets	\$8,176,769				
0910 Deferred Outflows of Resources					
Total Assets And Deferred Outflows Of Resources	\$8,176,769				

Amounts Expressed in Whole Dollars

	<u>Capital Reserve (1431)</u> <u>(32)</u>	<u>Other Capital Projects</u> <u>Fund</u> <u>(39)</u>	<u>Debt Service</u> <u>(40)</u>	<u>Permanent</u> <u>(90)</u>	<u>Total Governmental</u> <u>Funds</u>
Assets And Deferred Outflows Of Resources					
Assets					
0100 Cash and Cash Equivalents		69,114			390,709
0110 Investments					7,551,312
0120 Taxes Receivable					179,559
0130 Due From Other Funds					
0141 Due From Other Governments					92,303
0142 State Revenue Receivable					
0143 Federal Revenue Receivable					
0145 Other Intergovernmental Revenue Receivable					
0146 Due from Primary Government					
0147 Due from Component Unit					
0150 Other Receivables					
0170 Inventories					32,000
0180 Prepaid Expenses (Expenditures)					
0190 Other Current Assets					
Total Assets		\$69,114			\$8,245,883
0910 Deferred Outflows of Resources					
Total Assets And Deferred Outflows Of Resources		\$69,114			\$8,245,883

Amounts Expressed in Whole Dollars

<u>General Fund</u>	<u>Public Purpose Trust</u>	<u>Other Compt Approved</u>	<u>Athletic / Activity</u>	<u>Capital Reserve (690.</u>
<u>(10)</u>	<u>(27)</u>	<u>(28)</u>	<u>(29)</u>	<u>1850)</u>
				<u>(31)</u>

Liabilities And Deferred Inflows Of Resources And Fund Balances

Liabilities

0400 Due to Other Funds	
0411 Due to Other Governments	
0412 Due to Primary Government	
0413 Due to Component Unit	
0420 Accounts Payable	4,450
0430 Contracts Payable	
0440 Current Portion of Long-Term Debt	
0450 Short-Term Payables	
0461 Accrued Salaries and Benefits	
0462 Payroll Deductions and Withholding	
0480 Unearned Revenues	
0490 Other Current Liabilities	1,157,757

Total Liabilities **\$1,162,207**

0950 Deferred Inflows of Resources	179,559
------------------------------------	---------

Fund Balances

0810 Nonspendable Fund Balance	32,000
0820 Restricted Fund Balance	
0830 Committed Fund Balance	4,062,194
0840 Assigned Fund Balance	
0850 Unassigned Fund Balance	2,740,809

Total Fund Balances **\$6,835,003**

Total Liabilities, Deferred Inflows Of Resources And Fund Balances **\$8,176,769**

Amounts Expressed in Whole Dollars

	<u>Capital Reserve (1431)</u> <u>(32)</u>	<u>Other Capital Projects</u> <u>Fund</u> <u>(39)</u>	<u>Debt Service</u> <u>(40)</u>	<u>Permanent</u> <u>(90)</u>	<u>Total Governmental</u> <u>Funds</u>
Liabilities And Deferred Inflows Of Resources And Fund Balances					
Liabilities					
0400 Due to Other Funds					
0411 Due to Other Governments					
0412 Due to Primary Government					
0413 Due to Component Unit					
0420 Accounts Payable					4,450
0430 Contracts Payable					
0440 Current Portion of Long-Term Debt					
0450 Short-Term Payables					
0461 Accrued Salaries and Benefits					
0462 Payroll Deductions and Withholding					
0480 Unearned Revenues					
0490 Other Current Liabilities					1,157,757
Total Liabilities					\$1,162,207
0950 Deferred Inflows of Resources					179,559
Fund Balances					
0810 Nonspendable Fund Balance					32,000
0820 Restricted Fund Balance					
0830 Committed Fund Balance					4,062,194
0840 Assigned Fund Balance		69,114			69,114
0850 Unassigned Fund Balance					2,740,809
Total Fund Balances		\$69,114			\$6,904,117
Total Liabilities, Deferred Inflows Of Resources And Fund Balances		\$69,114			\$8,245,883

Amounts Expressed in Whole Dollars	<u>General Fund</u> <u>(10)</u>	<u>Public Purpose Trust</u> <u>(27)</u>	<u>Other Compt Approved</u> <u>(28)</u>	<u>Athletic / Activity</u> <u>(29)</u>	<u>Capital Reserve (690.</u> <u>1850)</u> <u>(31)</u>
Revenues					
6000 Revenue from Local Sources	2,656,854				
7000 Revenue from State Sources	8,488,451				
8000 Revenue from Federal Sources	296,492				
Total Revenues	\$11,441,797				
Expenditures					
1000 Instruction	6,790,790				
2000 Support Services	4,145,629				
3000 Operation of Non-Instructional Services	286,052				
4000 Facilities Acquisition, Construction and Improvement Services					
5110 Debt Service	337,806				
5130 Refund of Prior Year Revenues / Receipts					
Total Expenditures	\$11,560,277				
Excess (Deficiency) Of Revenues Over Expenditures	(\$118,480)				
Other Financing Sources (Uses)					
9110 Face Value of Bonds Issued					
9120 Proceeds from Refunding of Bonds					
9130 Bond Premiums					
9200 Proceeds from Extended-Term Financing					
9300 Interfund Transfers - IN					
9400 Sale of or Compensation for Loss of Fixed Assets					
9710 Transfers from Component Units					
9720 Transfers from Primary Governments					
9910 Other Financing Sources Not Listed in the 9000 Series					
9990 Insurance Recoveries					
5120 Debt Service – Refunded Bonds					
5150 Bond Discounts					
5200 Interfund Transfers – Out	103,899				
5300 Transfers Out to Component Units/Primary Governments					
Total Other Financing Sources (Uses)	(\$103,899)				

Amounts Expressed in Whole Dollars	<u>Capital Reserve (1431)</u> <u>(32)</u>	<u>Other Capital Projects</u> <u>Fund</u> <u>(39)</u>	<u>Debt Service</u> <u>(40)</u>	<u>Permanent</u> <u>(90)</u>	<u>Total Governmental</u> <u>Funds</u>
Revenues					
6000 Revenue from Local Sources		840			2,657,694
7000 Revenue from State Sources					8,488,451
8000 Revenue from Federal Sources					296,492
Total Revenues		\$840			\$11,442,637
Expenditures					
1000 Instruction					6,790,790
2000 Support Services		19,010			4,164,639
3000 Operation of Non-Instructional Services					286,052
4000 Facilities Acquisition, Construction and Improvement Services		135,202			135,202
5110 Debt Service					337,806
5130 Refund of Prior Year Revenues / Receipts					
Total Expenditures		\$154,212			\$11,714,489
Excess (Deficiency) Of Revenues Over Expenditures		(\$153,372)			(\$271,852)
Other Financing Sources (Uses)					
9110 Face Value of Bonds Issued					
9120 Proceeds from Refunding of Bonds					
9130 Bond Premiums					
9200 Proceeds from Extended-Term Financing					
9300 Interfund Transfers - IN					
9400 Sale of or Compensation for Loss of Fixed Assets					
9710 Transfers from Component Units					
9720 Transfers from Primary Governments					
9910 Other Financing Sources Not Listed in the 9000 Series					
9990 Insurance Recoveries					
5120 Debt Service – Refunded Bonds					
5150 Bond Discounts					
5200 Interfund Transfers – Out					103,899
5300 Transfers Out to Component Units/Primary Governments					
Total Other Financing Sources (Uses)					(\$103,899)

Amounts Expressed in Whole Dollars	<u>General Fund</u> <u>(10)</u>	<u>Public Purpose Trust</u> <u>(27)</u>	<u>Other Compt Approved</u> <u>(28)</u>	<u>Athletic / Activity</u> <u>(29)</u>	<u>Capital Reserve</u> <u>(690.</u> <u>1850)</u> <u>(31)</u>
Special And Extraordinary Items					
9920 Special Items – Gains					
9930 Extraordinary Items – Gains					
5520 Special Items – Losses					
5530 Extraordinary Items – Losses					
Net Change In Fund Balances	(\$222,379)				
Fund Balance					
0001 Fund Balance - Beginning of Fiscal Year	7,057,380				
Fund Balance - End Of Year	\$6,835,001				

Amounts Expressed in Whole Dollars	<u>Capital Reserve (1431)</u> <u>(32)</u>	<u>Other Capital Projects</u> <u>Fund</u> <u>(39)</u>	<u>Debt Service</u> <u>(40)</u>	<u>Permanent</u> <u>(90)</u>	<u>Total Governmental</u> <u>Funds</u>
Special And Extraordinary Items					
9920 Special Items – Gains					
9930 Extraordinary Items – Gains					
5520 Special Items – Losses					
5530 Extraordinary Items – Losses					
Net Change In Fund Balances		(\$153,372)			(\$375,751)
Fund Balance					
0001 Fund Balance - Beginning of Fiscal Year		222,486			7,279,866
Fund Balance - End Of Year		\$69,114			\$6,904,115

Amounts Expressed in Whole Dollars	<u>Food Service</u> <u>(51)</u>	<u>Child Care</u> <u>Operations</u> <u>(52)</u>	<u>Other Enterprise</u> <u>(58)</u>	<u>TOTAL</u>	<u>Internal Service</u> <u>(60)</u>
Assets And Deferred Outflows Of Resources					
Current Assets					
0100 Cash and Cash Equivalents	46,347			46,347	
0110 Investments					
0130 Due From Other Funds					
0141 Due From Other Governments					
0142 State Revenue Receivable					
0143 Federal Revenue Receivable					
0146 Due from Primary Government					
0147 Due from Component Unit					
0150 Other Receivables					
0170 Inventories	12,979			12,979	
0180 Prepaid Expenses (Expenditures)					
0190 Other Current Assets					
Total Current Assets	\$59,326			\$59,326	
Noncurrent Assets					
0211 Land					
0212 Site Improvements (Net)					
0220 Buildings and Building Improvements (Net)					
0230 Machinery, Equipment and Furniture (Net)	32,791			32,791	
0250 Construction in Progress					
0260 Long Term Prepayments					
0290 Other Noncurrent Assets					
Total Noncurrent Assets	\$32,791			\$32,791	
0910 Deferred Outflows of Resources					
Total Assets And Deferred Outflows Of Resources	\$92,117			\$92,117	

Amounts Expressed in Whole Dollars	<u>Food Service</u> (51)	<u>Child Care</u> <u>Operations</u> (52)	<u>Other Enterprise</u> (58)	<u>TOTAL</u>	<u>Internal Service</u> (60)
Liabilities And Deferred Inflows Of Resources And Net Position					
Current Liabilities					
0400 Due to Other Funds					
0411 Due to Other Governments					
0413 Due to Component Unit					
0420 Accounts Payable	78,138			78,138	
0430 Contracts Payable					
0440 Current Portion of Long-Term Debt					
0450 Short-Term Payables					
0461 Accrued Salaries and Benefits					
0462 Payroll Deductions and Withholding					
0480 Unearned Revenues					
0490 Other Current Liabilities					
Total Current Liabilities	\$78,138			\$78,138	
Noncurrent Liabilities					
0510 Bonds Payable					
0520 Extended-Term Financing Agreements Payable					
0530 Lease-Purchase Obligations					
0540 Accumulated Compensated Absences					
0550 Authority Lease Obligations					
0560 Other Post-Employment Benefits (OPEB)					
0570 Net Pension Liability					
0599 Other Noncurrent Liabilities					
Total Noncurrent Liabilities					
Total Liabilities	\$78,138			\$78,138	
0950 Deferred Inflows of Resources					
Net Position					
0791 Net Investment in Capital Assets	32,791			32,791	
0008 Restricted Net Position (0792 – 0798)					
0799 Unrestricted Net Position	(18,812)			(18,812)	
Total Net Position	\$13,979			\$13,979	
Total Liabilities And Deferred Inflows Of Resources And Net Position	\$92,117			\$92,117	

Amounts Expressed in Whole Dollars	<u>Food Service</u> <u>(51)</u>	<u>Child Care Operations</u> <u>(52)</u>	<u>Other Enterprise</u> <u>(58)</u>	<u>TOTAL</u>	<u>Internal Service</u> <u>(60)</u>
Operating Revenues					
6600 Food Service Revenue	120,986			120,986	
0071 Charges for Services					
0072 Other Operating Revenue					
Total Operating Revenues	\$120,986			\$120,986	
Operating Expenses					
100 Personnel Services – Salaries	179,906			179,906	
200 Personnel Services – Employee Benefits	121,552			121,552	
300 Purchased Professional and Technical Services					
400 Purchased Property Services	5,436			5,436	
500 Other Purchased Services	1,114			1,114	
600 Supplies	156,987			156,987	
740 Depreciation	4,982			4,982	
810 Dues and Fees	749			749	
890 Miscellaneous Expenditures					
Total Operating Expenses	\$470,726			\$470,726	
Operating Income (Loss)	(\$349,740)			(\$349,740)	
Non Operating Revenues (Expenses)					
6500 Earnings on Investments	1,155			1,155	
6920 Contributions and Donations from Private Sources					
6930 Gains or Losses on Sale of Fixed Assets					
6991 Refunds of a Prior Year Expenditure					
7000 Revenue from State Sources	16,510			16,510	
8000 Revenue from Federal Sources	255,860			255,860	
9990 Insurance Recoveries					
820 Claims and Judgments Against the LEA					
830 Interest					
TOTAL Non Operating Revenues (Expenses)	\$273,525			\$273,525	
Income (Loss) Before Contributions And Transfers	(\$76,215)			(\$76,215)	

Amounts Expressed in Whole Dollars	<u>Food Service</u> <u>(51)</u>	<u>Child Care Operations</u> <u>(52)</u>	<u>Other Enterprise</u> <u>(58)</u>	<u>TOTAL</u>	<u>Internal Service</u> <u>(60)</u>
Contributions, Transfers, and Special and Extraordinary Items					
5200 Interfund Transfers – Out					
5300 Transfers Out to Component Units/Primary Governments					
5520 Special Items – Losses					
5530 Extraordinary Items – Losses					
9300 Interfund Transfers - IN	103,899			103,899	
9500 Capital Contributions					
9700 Transfers IN From Component Units/Primary Governments					
9920 Special Items – Gains					
9930 Extraordinary Items – Gains					
Change In Net Position	\$27,684			\$27,684	
0002 Net Position - Beginning of Fiscal Year	(13,704)			(13,704)	
0003 Accounting Changes / Residual Equity Transfers					
Net Position - End Of Year	\$13,980			\$13,980	

Amounts Expressed in Whole Dollars	<u>Food Service</u> <u>(51)</u>	<u>Child Care Operations</u> <u>(52)</u>	<u>Other Enterprise</u> <u>(58)</u>	<u>TOTAL</u>	<u>Internal Service(60)</u>
Cash Flows From Operating Activities					
0011 Cash Receipts From Users	120,986			120,986	
0012 Cash Receipts From Assessments Made to Other Funds					
0013 Cash Receipts From Earnings on Investments					
0014 Cash Receipts From Other Operating Revenue					
0015 Cash Payments To Employees For Services	301,459			301,459	
0016 Cash Payments For Insurance Claims					
0017 Cash Payments To Suppliers For Goods and Services	158,287			158,287	
0018 Cash Payments For Other Operating Expenses					
Net Cash Provided By (Used For) Operating Activities	(\$338,760)			(\$338,760)	
Cash Flows From Non-Capital Financing Activities					
0021 Receipts From Local Sources - 6000					
0022 Receipts From State Sources - 7000	16,510			16,510	
0023 Receipts From Federal Sources -8000	255,860			255,860	
0024 Notes and Loans Received (Repaid)					
0025 Interest Paid on Notes/Loans - 5100-830					
0026 Operating Transfers In (Out)/Residual Equity Trans					
0027 Operating Transfers In (Out) Primary Government / Comp Unit	103,899			103,899	
0028 Receipts From Refund of Prior Year Expenditures - 6991					
0029 Special and Extraordinary Gains (losses)					
0030 Receipts from Insurance Recoveries -9990					
Net Cash Prov By (Used for) Non-Capital Financing Activities	\$376,269			\$376,269	
Cash Flows From Capital and Related Financing Activities					
0031 Payments For Fac Acq, Const, and Imp - 4000	(7,838)			(7,838)	
0032 Gain / (Loss) on Sale of Fixed Assets - 6930					
0033 Proceeds From Extended Term Financing - 9200					
0034 Principal Paid on Financing Agreements					
0035 Interest Paid on Financing Agreements - 5100-830					
0036 (Inc) Dec in Contributed Capital					
Net Cash Prov By (Used for) Capital and Related Financing Activities	(\$7,838)			(\$7,838)	
Cash Flows From Investing Activities					
0041 Earnings on Investments - 6500	1,155			1,155	
0042 Purchase of Inv Securities / Deposits to Inv Pools					
0043 Receipts From Investment Pool Withdrawals					
0044 Proceeds from Sale and Maturity of Inv Securities					

LEA : 106169003 Union SD

Printed 10/23/2019 9:16:22 AM

0045 Loans Received (Paid)

Net Cash Prov By (Used for) Investing Activities	\$1,155	\$1,155
---	----------------	----------------

	<u>Food Service</u> (51)	<u>Child Care Operations</u> (52)	<u>Other Enterprise</u> (58)	<u>TOTAL</u>	<u>Internal Service</u> (60)
Net Increase (Decrease) in Cash Flows	30,826			30,826	
0004 Cash and Cash Equivalents Beginning of Year	15,521			15,521	
Cash and Cash Equivalents at Year End	\$46,347			\$46,347	

Reconciliation of Operating Income (Loss) To Net Cash Provided by (Used For) Operating Activities

0005 Operating Income (Loss) per REP	(349,740)			(349,740)	
Adjustments					
0051 Depreciation and Net Amortization	4,982			4,982	
0052 Provision for Uncollectible Accounts					
0053 Other Adjustments					
Effect of Changes in Assets, Liabilities, Deferred Outflows and Deferred Inflows					
0054 (Inc) Dec In Accounts Receivable (0120-0150)					
0055 Advances to Other Funds (0160)					
0056 (Inc) Dec in Inventories (0170)	5,998			5,998	
0057 (Inc) Dec in Prepaid Expenses (0180)					
0058 (Inc) Dec in Other Current or Noncurrent Assets					
0064 Deferred Outflows (0910)					
0059 Inc (Dec) in Accounts Payable (0400-0450)					
0060 Inc (Dec) in Accrued Salaries/Benefits (0461)					
0065 Inc (Dec) in Net Pension Liabilities (0570)					
0066 Inc (Dec) in Other Postemp Benefit Oblig (0560)					
0061 Inc (Dec) in Payroll Deductions/Withholding (0462)					
0062 Inc (Dec) in Unearned Revenue (0480)					
0063 Inc (Dec) in Other Current or Noncurrent Liabilities					
0067 Deferred Inflows (0950)					
Total Adjustments	\$10,980			\$10,980	
Cash Provided By (Used for) Total	(\$338,760)			(\$338,760)	

COMBINED STATEMENT OF CASH FLOWS
SCHEDULE OF NONCASH INVESTING, CAPITAL, AND FINANCING ACTIVITIES

Explanation of Transaction and Balance Sheet Effect	Amount
Total	

LEA : 106169003 Union SD

Printed 10/23/2019 9:16:25 AM

Amounts Expressed in Whole Dollars

Private Purpose Trust
(71)

Investment Trust
(72)

Pension Trust
(73)

Activity
(81)

Assets And Deferred Outflows Of Resources

Assets

0100 Cash and Cash Equivalents	52,997
0110 Investments	153,402
0130 Due From Other Funds	
0147 Due from Component Unit	
0150 Other Receivables	
0170 Inventories	
0180 Prepaid Expenses (Expenditures)	
0190 Other Current Assets	
0220 Buildings and Building Improvements (Net)	
0230 Machinery, Equipment and Furniture (Net)	

Total Assets **\$206,399**

0910 Deferred Outflows of Resources

Total Assets And Deferred Outflows Of Resources **\$206,399**

LEA : 106169003 Union SD

Printed 10/23/2019 9:16:25 AM

Amounts Expressed in Whole Dollars

	<u>Other Agency</u> <u>(89)</u>	<u>Discrete Component Units</u> <u>(98)</u>	<u>Discrete Component Units</u> <u>(99)</u>	<u>Total Fiduciary Funds</u>
Assets And Deferred Outflows Of Resources				
Assets				
0100 Cash and Cash Equivalents				52,997
0110 Investments				153,402
0130 Due From Other Funds				
0147 Due from Component Unit				
0150 Other Receivables				
0170 Inventories				
0180 Prepaid Expenses (Expenditures)				
0190 Other Current Assets				
0220 Buildings and Building Improvements (Net)				
0230 Machinery, Equipment and Furniture (Net)				
Total Assets				\$206,399
0910 Deferred Outflows of Resources				
Total Assets And Deferred Outflows Of Resources				\$206,399

LEA : 106169003 Union SD

Printed 10/23/2019 9:16:25 AM

Amounts Expressed in Whole Dollars	<u>Private Purpose Trust</u> (71)	<u>Investment Trust</u> (72)	<u>Pension Trust</u> (73)	<u>Activity</u> (81)
Liabilities, Deferred Inflows Of Resources And Net Position				
Liabilities				
0400 Due to Other Funds				
0411 Due to Other Governments				
0412 Due to Primary Government				
0413 Due to Component Unit				
0420 Accounts Payable				
0430 Contracts Payable				
0450 Short-Term Payables				
0461 Accrued Salaries and Benefits				
0462 Payroll Deductions and Withholding				
0480 Unearned Revenues				
0490 Other Current Liabilities		50,638		
Total Liabilities		\$50,638		
0950 Deferred Inflows of Resources				
Net Position				
0791 Net Investment in Capital Assets				
0009 Restricted Net Position (0792 – 0798)		155,761		
0799 Unrestricted Net Position				
Total Net Position		\$155,761		
Total Liabilities, Deferred Inflows Of Resources And Net Position		\$206,399		

LEA : 106169003 Union SD

Printed 10/23/2019 9:16:25 AM

Amounts Expressed in Whole Dollars	<u>Other Agency</u> (89)	<u>Discrete Component Units</u> (98)	<u>Discrete Component Units</u> (99)	<u>Total Fiduciary Funds</u>
Liabilities, Deferred Inflows Of Resources And Net Position				
Liabilities				
0400 Due to Other Funds				
0411 Due to Other Governments				
0412 Due to Primary Government				
0413 Due to Component Unit				
0420 Accounts Payable				
0430 Contracts Payable				
0450 Short-Term Payables				
0461 Accrued Salaries and Benefits				
0462 Payroll Deductions and Withholding				
0480 Unearned Revenues				
0490 Other Current Liabilities				50,638
Total Liabilities				\$50,638
0950 Deferred Inflows of Resources				
Net Position				
0791 Net Investment in Capital Assets				
0009 Restricted Net Position (0792 – 0798)				155,761
0799 Unrestricted Net Position				
Total Net Position				\$155,761
Total Liabilities, Deferred Inflows Of Resources And Net Position				\$206,399

Amounts Expressed in Whole Dollars	<u>Private Purpose Trust</u> (71)	<u>Investment Trust</u> (72)	<u>Pension Trust</u> (73)	<u>Discrete Component</u> <u>Units</u> (98)	<u>Discrete Component</u> <u>Units</u> (99)	<u>Total Fiduciary</u> <u>Funds</u>
Additions						
0091 Gifts and Contributions	2,334					2,334
0092 Other Additions	5,959					5,959
Deductions						
0093 Scholarships Awarded	3,086					3,086
0094 Other Deductions						
Change In Net Position	\$5,207					\$5,207
0006 Net Position – Beginning of Fiscal Year	150,554					150,554
0007 Net Position Held in Trust for Pension Benefits						
Net Position - End of Fiscal Year	\$155,761					\$155,761

	<u>Revenue Reported In Current Year</u>	<u>Current Year Tax Accrual</u>	<u>Prior Year Tax Accrual</u>	<u>Taxes Collected In Current Year</u>
<u>Revenue from Local Sources</u>				
6111 Current Real Estate Taxes	1,451,579.52			1,451,579.52
6113 Public Utility Realty Taxes	2,302.62			2,302.62
6114 Payments in Lieu of Current Taxes - State / Local	4,803.94			4,803.94
6120 Current Per Capita Taxes, Section 679	8,851.35			8,851.35
6141 Current Act 511 Per Capita Taxes	8,851.35			8,851.35
6143 Current Act 511 Local Services Taxes	7,477.64			7,477.64
6151 Current Act 511 Earned Income Taxes	336,365.29			336,365.29
6152 Current Act 511 Occupation Taxes	84,937.32			84,937.32
6153 Current Act 511 Real Estate Transfer Taxes	19,435.51			19,435.51
6411 Delinquent Real Estate Taxes	173,803.56			173,803.56
6420 Delinquent Per Capita Taxes, Section 679	4,126.66			4,126.66
6440 Delinquent Local Enabling Taxes - Flat Rate Assessments	24,762.55			24,762.55
6500 Earnings on Investments	127,164.00			
6700 Revenues from LEA Activities	15,351.00			
6821 State Revenue Received from Other Pennsylvania Public LEAs	41,949.21			
6832 Federal IDEA Revenue Received as Pass Through	200,131.44			
6910 Rentals	15,679.35			
6942 Summer School Tuition	35,643.67			
6991 Refunds of a Prior Year Expenditure	4,099.46			
6999 Other Revenues Not Specified Above	89,538.52			
TOTAL Revenue from Local Sources	\$2,656,853.96			\$2,127,297.31

**Revenue Reported
In Current Year**

Revenue from State Sources

7110 Basic Education Funding	5,704,264.81			
7240 Driver Education - Student	105.00			
7271 Special Education funds for School-Aged Pupils	589,396.59			
7311 Pupil Transportation Subsidy	429,420.20			
7330 Health Services (Medical, Dental, Nurse, Act 25)	10,097.66			
7340 State Property Tax Reduction Allocation	140,822.12			
7361 School Safety and Security Grants	25,000.00			
7505 Ready to Learn Block Grant	157,782.00			
7810 State Share of Social Security and Medicare Taxes	266,836.79			
7820 State Share of Retirement Contributions	1,164,725.53			
TOTAL Revenue from State Sources	\$8,488,450.70			

**Revenue Reported
In Current Year**

Revenue from Federal Sources

8514 NCLB, Title I - Improving the Academic Achievement of the Disadvantaged	181,451.00		
8515 NCLB, Title II - Preparing, Training and Recruiting High Quality Teachers and Principals	26,844.00		
8517 NCLB, Title IV - 21St Century Schools	12,253.00		
8810 School-Based Access Medicaid Reimbursement Program (SBAP) Reimbursements (Access)	74,358.26		
8820 Medical Assistance Reimbursement for Administrative Claiming (Quarterly) Program	1,586.16		
TOTAL Revenue from Federal Sources	\$296,492.42		
TOTAL FROM ALL SOURCES	\$11,441,797.08		\$2,127,297.31

Revenue from Local Sources	2,656,853.96
Revenue from State Sources	8,488,450.70
Revenue from Federal Sources	296,492.42
Other Financing Sources	
TOTAL FROM ALL SOURCES	\$11,441,797.08

General Fund (10)

1000 Instruction	<u>Total</u>
100 Personnel Services – Salaries	
100 Personnel Services – Salaries	3,156,283.86
Total Personnel Services – Salaries	\$3,156,283.86
200 Personnel Services – Employee Benefits	
210 Group Insurance – Contracted Provider	990,233.74
220 Social Security Contributions	241,456.56
230 PSERS Retirement Contributions	1,051,167.67
250 Unemployment Compensation	3,919.91
260 Workers' Compensation	16,858.66
Total Personnel Services – Employee Benefits	\$2,303,636.54
300 Purchased Professional and Technical Services	
322 Professional Educational Services – Ius	142,348.57
329 Professional Educational Services – Other	100,193.45
330 Other Professional Services	2,760.00
Total Purchased Professional and Technical Services	\$245,302.02
400 Purchased Property Services	
430 Repairs and Maintenance Services	16,872.97
Total Purchased Property Services	\$16,872.97
500 Other Purchased Services	
510 Student Transportation Services	4,451.79
530 Communications	646.56
561 Tuition To Other School Districts Within the State	44,005.05
562 Tuition To Pennsylvania Charter Schools	378,587.96
564 Tuition To Career and Technology Centers	219,774.00
568 Tuition To Private Residential Rehabilitative Institutions (PRRI) [In-State] and Detention Centers	41,239.00
569 Tuition – Other	193,523.09
580 Travel	7,236.25
Total Other Purchased Services	\$889,463.70
600 Supplies	
610 General Supplies	80,354.51
620 Energy	1,182.05
640 Books and Periodicals	52,503.50
650 Supplies & Fees – Technology Related	3,452.52
Total Supplies	\$137,492.58
700 Property	
752 Capital Equipment – Original and Additional	323.33
762 Capitalized Equipment - Replacement	15,056.35
766 Capitalized Technology Equipment – Replacement	25,386.25
Total Property	\$40,765.93
800 Other Objects	
810 Dues and Fees	972.15

LEA : 106169003 Union SD

Printed 10/23/2019 9:16:38 AM

General Fund (10)

1000 Instruction

	<u>Total</u>
Total Other Objects	\$972.15
Total 1000 Instruction	\$6,790,789.75

General Fund (10)

1100 Regular Programs – Elementary / Secondary

	<u>Elementary</u>	<u>Secondary</u>	<u>Federal</u>	<u>Total</u>
100 Personnel Services – Salaries				
100 Personnel Services – Salaries	1,349,196.48	1,164,740.80	109,161.24	2,623,098.52
Total Personnel Services – Salaries	\$1,349,196.48	\$1,164,740.80	\$109,161.24	\$2,623,098.52
200 Personnel Services – Employee Benefits				
210 Group Insurance – Contracted Provider	429,818.19	380,522.67	32,698.03	843,038.89
220 Social Security Contributions	103,059.22	89,103.08	8,506.06	200,668.36
230 PSERS Retirement Contributions	447,751.01	389,372.46	37,170.90	874,294.37
250 Unemployment Compensation	3,660.58	140.62	18.23	3,819.43
260 Workers' Compensation	7,381.11	6,104.83	431.90	13,917.84
Total Personnel Services – Employee Benefits	\$991,670.11	\$865,243.66	\$78,825.12	\$1,935,738.89
300 Purchased Professional and Technical Services				
322 Professional Educational Services – lus	312.50	312.50		625.00
329 Professional Educational Services – Other	37,914.97	53,827.47		91,742.44
330 Other Professional Services		2,760.00		2,760.00
Total Purchased Professional and Technical Services	\$38,227.47	\$56,899.97		\$95,127.44
400 Purchased Property Services				
430 Repairs and Maintenance Services	6,477.13	10,395.84		16,872.97
Total Purchased Property Services	\$6,477.13	\$10,395.84		\$16,872.97
500 Other Purchased Services				
510 Student Transportation Services	592.89	285.77		878.66
530 Communications	42.06			42.06
561 Tuition To Other School Districts Within the State	7,436.10	36,568.95		44,005.05
562 Tuition To Pennsylvania Charter Schools	91,947.39	151,473.00		243,420.39
568 Tuition To Private Residential Rehabilitative Institutions (PRRI) [In-State] and Detention Centers		26,746.37		26,746.37
569 Tuition – Other		20,435.69		20,435.69
580 Travel	2,777.04	242.21	2,941.42	5,960.67
Total Other Purchased Services	\$102,795.48	\$235,751.99	\$2,941.42	\$341,488.89
600 Supplies				
610 General Supplies	30,053.20	30,083.69	7,853.26	67,990.15
620 Energy	0.55	674.73		675.28
640 Books and Periodicals	17,904.82	19,417.03		37,321.85
650 Supplies & Fees – Technology Related			3,452.52	3,452.52
Total Supplies	\$47,958.57	\$50,175.45	\$11,305.78	\$109,439.80
700 Property				
752 Capital Equipment – Original and Additional	174.99			174.99
762 Capitalized Equipment - Replacement	7,387.26	3,208.26		10,595.52
766 Capitalized Technology Equipment – Replacement	4,646.30	4,646.30		9,292.60
Total Property	\$12,208.55	\$7,854.56		\$20,063.11
800 Other Objects				
810 Dues and Fees	150.00	410.00		560.00
Total Other Objects	\$150.00	\$410.00		\$560.00
Total 1100 Regular Programs – Elementary / Secondary	\$2,548,683.79	\$2,391,472.27	\$202,233.56	\$5,142,389.62

LEA : 106169003 Union SD

Printed 10/23/2019 9:16:38 AM

Page - 4 of 15

General Fund (10)**1110 Regular Programs**

	<u>Elementary</u>	<u>Secondary</u>	<u>Federal</u>	<u>Total</u>
100 Personnel Services – Salaries				
100 Personnel Services – Salaries	1,349,196.48	1,164,740.80		2,513,937.28
Total Personnel Services – Salaries	\$1,349,196.48	\$1,164,740.80		\$2,513,937.28
200 Personnel Services – Employee Benefits				
210 Group Insurance – Contracted Provider	429,818.19	380,522.67		810,340.86
220 Social Security Contributions	103,059.22	89,103.08		192,162.30
230 PSERS Retirement Contributions	447,751.01	389,372.46		837,123.47
250 Unemployment Compensation	3,660.58	140.62		3,801.20
260 Workers' Compensation	7,381.11	6,104.83		13,485.94
Total Personnel Services – Employee Benefits	\$991,670.11	\$865,243.66		\$1,856,913.77
300 Purchased Professional and Technical Services				
322 Professional Educational Services – lus	312.50	312.50		625.00
329 Professional Educational Services – Other	37,914.97	53,827.47		91,742.44
330 Other Professional Services		2,760.00		2,760.00
Total Purchased Professional and Technical Services	\$38,227.47	\$56,899.97		\$95,127.44
400 Purchased Property Services				
430 Repairs and Maintenance Services	6,477.13	10,395.84		16,872.97
Total Purchased Property Services	\$6,477.13	\$10,395.84		\$16,872.97
500 Other Purchased Services				
510 Student Transportation Services	592.89	285.77		878.66
530 Communications	42.06			42.06
561 Tuition To Other School Districts Within the State	7,436.10	36,568.95		44,005.05
562 Tuition To Pennsylvania Charter Schools	91,947.39	151,473.00		243,420.39
568 Tuition To Private Residential Rehabilitative Institutions (PRRI) [In-State] and Detention Centers		26,746.37		26,746.37
569 Tuition – Other		20,435.69		20,435.69
580 Travel	2,777.04	242.21		3,019.25
Total Other Purchased Services	\$102,795.48	\$235,751.99		\$338,547.47
600 Supplies				
610 General Supplies	30,053.20	30,083.69		60,136.89
620 Energy	0.55	674.73		675.28
640 Books and Periodicals	17,904.82	19,417.03		37,321.85
Total Supplies	\$47,958.57	\$50,175.45		\$98,134.02
700 Property				
752 Capital Equipment – Original and Additional	174.99			174.99
762 Capitalized Equipment - Replacement	7,387.26	3,208.26		10,595.52
766 Capitalized Technology Equipment – Replacement	4,646.30	4,646.30		9,292.60
Total Property	\$12,208.55	\$7,854.56		\$20,063.11
800 Other Objects				
810 Dues and Fees	150.00	410.00		560.00
Total Other Objects	\$150.00	\$410.00		\$560.00
Total 1110 Regular Programs	\$2,548,683.79	\$2,391,472.27		\$4,940,156.06

General Fund (10)

	<u>Elementary</u>	<u>Secondary</u>	<u>Federal</u>	<u>Total</u>
1190 Federally-Funded Regular Programs				
100 Personnel Services – Salaries				
100 Personnel Services – Salaries			109,161.24	109,161.24
Total Personnel Services – Salaries			\$109,161.24	\$109,161.24
200 Personnel Services – Employee Benefits				
210 Group Insurance – Contracted Provider			32,698.03	32,698.03
220 Social Security Contributions			8,506.06	8,506.06
230 PSERS Retirement Contributions			37,170.90	37,170.90
250 Unemployment Compensation			18.23	18.23
260 Workers' Compensation			431.90	431.90
Total Personnel Services – Employee Benefits			\$78,825.12	\$78,825.12
500 Other Purchased Services				
580 Travel			2,941.42	2,941.42
Total Other Purchased Services			\$2,941.42	\$2,941.42
600 Supplies				
610 General Supplies			7,853.26	7,853.26
650 Supplies & Fees – Technology Related			3,452.52	3,452.52
Total Supplies			\$11,305.78	\$11,305.78
Total 1190 Federally-Funded Regular Programs			\$202,233.56	\$202,233.56

General Fund (10)

1200 Special Programs – Elementary / Secondary	<u>Elementary</u>	<u>Secondary</u>	<u>Federal</u>	<u>Total</u>
100 Personnel Services – Salaries				
100 Personnel Services – Salaries	230,509.74	154,752.70	104,103.01	489,365.45
Total Personnel Services – Salaries	\$230,509.74	\$154,752.70	\$104,103.01	\$489,365.45
200 Personnel Services – Employee Benefits				
210 Group Insurance – Contracted Provider	48,836.97	90,751.44		139,588.41
220 Social Security Contributions	17,820.64	19,615.63		37,436.27
230 PSERS Retirement Contributions	76,506.91	85,719.06		162,225.97
250 Unemployment Compensation	48.66	44.00		92.66
260 Workers' Compensation	1,424.30	1,130.68		2,554.98
Total Personnel Services – Employee Benefits	\$144,637.48	\$197,260.81		\$341,898.29
300 Purchased Professional and Technical Services				
322 Professional Educational Services – lus	70,861.78	70,861.79		141,723.57
329 Professional Educational Services – Other	3,063.70	4,672.35		7,736.05
Total Purchased Professional and Technical Services	\$73,925.48	\$75,534.14		\$149,459.62
500 Other Purchased Services				
510 Student Transportation Services	4.73	988.40		993.13
530 Communications	302.25	302.25		604.50
562 Tuition To Pennsylvania Charter Schools	61,472.58	73,694.99		135,167.57
568 Tuition To Private Residential Rehabilitative Institutions (PRRI) [In-State] and Detention Centers		14,492.63		14,492.63
569 Tuition – Other	173,087.40			173,087.40
580 Travel	545.48	730.10		1,275.58
Total Other Purchased Services	\$235,412.44	\$90,208.37		\$325,620.81
600 Supplies				
610 General Supplies	5,886.24	3,252.65	3,225.47	12,364.36
620 Energy	6.46	313.59		320.05
640 Books and Periodicals		92.27	13,723.36	13,815.63
Total Supplies	\$5,892.70	\$3,658.51	\$16,948.83	\$26,500.04
700 Property				
752 Capital Equipment – Original and Additional	148.34			148.34
762 Capitalized Equipment - Replacement			4,460.83	4,460.83
766 Capitalized Technology Equipment – Replacement	8,514.30		7,579.35	16,093.65
Total Property	\$8,662.64		\$12,040.18	\$20,702.82
800 Other Objects				
810 Dues and Fees	50.00	212.15	150.00	412.15
Total Other Objects	\$50.00	\$212.15	\$150.00	\$412.15
Total 1200 Special Programs – Elementary / Secondary	\$699,090.48	\$521,626.68	\$133,242.02	\$1,353,959.18

General Fund (10)

1210 Life Skills Support

	<u>Elementary</u>	<u>Secondary</u>	<u>Federal</u>	<u>Total</u>
100 Personnel Services – Salaries				
100 Personnel Services – Salaries		47,911.61	51,417.38	99,328.99
Total Personnel Services – Salaries		\$47,911.61	\$51,417.38	\$99,328.99
200 Personnel Services – Employee Benefits				
210 Group Insurance – Contracted Provider		21,737.28		21,737.28
220 Social Security Contributions		7,598.72		7,598.72
230 PSERS Retirement Contributions		33,205.72		33,205.72
250 Unemployment Compensation		21.64		21.64
260 Workers' Compensation		509.53		509.53
Total Personnel Services – Employee Benefits		\$63,072.89		\$63,072.89
300 Purchased Professional and Technical Services				
329 Professional Educational Services – Other		1,562.30		1,562.30
Total Purchased Professional and Technical Services		\$1,562.30		\$1,562.30
500 Other Purchased Services				
510 Student Transportation Services		162.64		162.64
580 Travel		713.75		713.75
Total Other Purchased Services		\$876.39		\$876.39
600 Supplies				
610 General Supplies		1,280.79	1,166.82	2,447.61
620 Energy		150.79		150.79
640 Books and Periodicals		92.27	1,874.05	1,966.32
Total Supplies		\$1,523.85	\$3,040.87	\$4,564.72
700 Property				
762 Capitalized Equipment - Replacement			4,460.83	4,460.83
Total Property			\$4,460.83	\$4,460.83
Total 1210 Life Skills Support		\$114,947.04	\$58,919.08	\$173,866.12

LEA : 106169003 Union SD

Printed 10/23/2019 9:16:38 AM

Page - 8 of 15

General Fund (10)**1240 Academic Support**

	<u>Elementary</u>	<u>Secondary</u>	<u>Federal</u>	<u>Total</u>
100 Personnel Services – Salaries				
100 Personnel Services – Salaries	230,509.74	106,841.09	52,685.63	390,036.46
Total Personnel Services – Salaries	\$230,509.74	\$106,841.09	\$52,685.63	\$390,036.46
200 Personnel Services – Employee Benefits				
210 Group Insurance – Contracted Provider	48,836.97	69,014.16		117,851.13
220 Social Security Contributions	17,820.64	12,016.91		29,837.55
230 PSERS Retirement Contributions	76,506.91	52,513.34		129,020.25
250 Unemployment Compensation	48.66	22.36		71.02
260 Workers' Compensation	1,424.30	621.15		2,045.45
Total Personnel Services – Employee Benefits	\$144,637.48	\$134,187.92		\$278,825.40
300 Purchased Professional and Technical Services				
322 Professional Educational Services – lus	70,861.78	70,861.79		141,723.57
329 Professional Educational Services – Other	3,063.70	3,110.05		6,173.75
Total Purchased Professional and Technical Services	\$73,925.48	\$73,971.84		\$147,897.32
500 Other Purchased Services				
510 Student Transportation Services	4.73	825.76		830.49
530 Communications	302.25	302.25		604.50
562 Tuition To Pennsylvania Charter Schools	61,472.58	73,694.99		135,167.57
568 Tuition To Private Residential Rehabilitative Institutions (PRRI) [In-State] and Detention Centers		14,492.63		14,492.63
569 Tuition – Other	173,087.40			173,087.40
580 Travel	545.48	16.35		561.83
Total Other Purchased Services	\$235,412.44	\$89,331.98		\$324,744.42
600 Supplies				
610 General Supplies	5,886.24	1,971.86	2,058.65	9,916.75
620 Energy	6.46	162.80		169.26
640 Books and Periodicals			11,849.31	11,849.31
Total Supplies	\$5,892.70	\$2,134.66	\$13,907.96	\$21,935.32
700 Property				
752 Capital Equipment – Original and Additional	148.34			148.34
766 Capitalized Technology Equipment – Replacement	8,514.30		7,579.35	16,093.65
Total Property	\$8,662.64		\$7,579.35	\$16,241.99
800 Other Objects				
810 Dues and Fees	50.00	212.15	150.00	412.15
Total Other Objects	\$50.00	\$212.15	\$150.00	\$412.15
Total 1240 Academic Support	\$699,090.48	\$406,679.64	\$74,322.94	\$1,180,093.06

General Fund (10)

	<u>Elementary</u>	<u>Secondary</u>	<u>Federal</u>	<u>Total</u>
1241 Learning Support – Public				
100 Personnel Services – Salaries				
100 Personnel Services – Salaries	219,621.35	101,588.37	52,685.63	373,895.35
Total Personnel Services – Salaries	\$219,621.35	\$101,588.37	\$52,685.63	\$373,895.35
200 Personnel Services – Employee Benefits				
210 Group Insurance – Contracted Provider	44,933.15	66,787.92		111,721.07
220 Social Security Contributions	16,987.75	11,614.97		28,602.72
230 PSERS Retirement Contributions	72,866.90	50,757.33		123,624.23
250 Unemployment Compensation	47.52	21.67		69.19
260 Workers' Compensation	1,424.30	621.15		2,045.45
Total Personnel Services – Employee Benefits	\$136,259.62	\$129,803.04		\$266,062.66
300 Purchased Professional and Technical Services				
322 Professional Educational Services – lus	70,861.78	70,861.79		141,723.57
329 Professional Educational Services – Other	3,063.70	3,110.05		6,173.75
Total Purchased Professional and Technical Services	\$73,925.48	\$73,971.84		\$147,897.32
500 Other Purchased Services				
530 Communications	302.25	302.25		604.50
562 Tuition To Pennsylvania Charter Schools	61,472.58	73,694.99		135,167.57
568 Tuition To Private Residential Rehabilitative Institutions (PRRI) [In-State] and Detention Centers		14,492.63		14,492.63
569 Tuition – Other	173,087.40			173,087.40
580 Travel	545.48	16.35		561.83
Total Other Purchased Services	\$235,407.71	\$88,506.22		\$323,913.93
600 Supplies				
610 General Supplies	5,886.24	1,222.86	2,058.65	9,167.75
640 Books and Periodicals			11,849.31	11,849.31
Total Supplies	\$5,886.24	\$1,222.86	\$13,907.96	\$21,017.06
700 Property				
752 Capital Equipment – Original and Additional	148.34			148.34
766 Capitalized Technology Equipment – Replacement	8,514.30		7,579.35	16,093.65
Total Property	\$8,662.64		\$7,579.35	\$16,241.99
800 Other Objects				
810 Dues and Fees	50.00		150.00	200.00
Total Other Objects	\$50.00		\$150.00	\$200.00
Total 1241 Learning Support – Public	\$679,813.04	\$395,092.33	\$74,322.94	\$1,149,228.31

General Fund (10)

1243 Gifted Support

	<u>Elementary</u>	<u>Secondary</u>	<u>Federal</u>	<u>Total</u>
100 Personnel Services – Salaries				
100 Personnel Services – Salaries	10,888.39	5,252.72		16,141.11
Total Personnel Services – Salaries	\$10,888.39	\$5,252.72		\$16,141.11
200 Personnel Services – Employee Benefits				
210 Group Insurance – Contracted Provider	3,903.82	2,226.24		6,130.06
220 Social Security Contributions	832.89	401.94		1,234.83
230 PSERS Retirement Contributions	3,640.01	1,756.01		5,396.02
250 Unemployment Compensation	1.14	0.69		1.83
Total Personnel Services – Employee Benefits	\$8,377.86	\$4,384.88		\$12,762.74
500 Other Purchased Services				
510 Student Transportation Services	4.73	825.76		830.49
Total Other Purchased Services	\$4.73	\$825.76		\$830.49
600 Supplies				
610 General Supplies		749.00		749.00
620 Energy	6.46	162.80		169.26
Total Supplies	\$6.46	\$911.80		\$918.26
800 Other Objects				
810 Dues and Fees		212.15		212.15
Total Other Objects		\$212.15		\$212.15
Total 1243 Gifted Support	\$19,277.44	\$11,587.31		\$30,864.75

General Fund (10)

1300 Vocational Education

	<u>Elementary</u>	<u>Secondary</u>	<u>Federal</u>	<u>Total</u>
100 Personnel Services – Salaries				
100 Personnel Services – Salaries		38,752.54		38,752.54
Total Personnel Services – Salaries		\$38,752.54		\$38,752.54
200 Personnel Services – Employee Benefits				
210 Group Insurance – Contracted Provider		7,606.44		7,606.44
220 Social Security Contributions		2,964.63		2,964.63
230 PSERS Retirement Contributions		12,954.92		12,954.92
250 Unemployment Compensation		7.40		7.40
260 Workers' Compensation		303.31		303.31
Total Personnel Services – Employee Benefits		\$23,836.70		\$23,836.70
300 Purchased Professional and Technical Services				
329 Professional Educational Services – Other		714.96		714.96
Total Purchased Professional and Technical Services		\$714.96		\$714.96
500 Other Purchased Services				
564 Tuition To Career and Technology Centers		219,774.00		219,774.00
Total Other Purchased Services		\$219,774.00		\$219,774.00
600 Supplies				
640 Books and Periodicals		1,366.02		1,366.02
Total Supplies		\$1,366.02		\$1,366.02
Total 1300 Vocational Education		\$284,444.22		\$284,444.22

General Fund (10)

1400 Other Instructional Programs – Elementary / Secondary

	<u>Elementary</u>	<u>Secondary</u>	<u>Federal</u>	<u>Total</u>
100 Personnel Services – Salaries				
100 Personnel Services – Salaries	3,987.49	1,079.86		5,067.35
Total Personnel Services – Salaries	\$3,987.49	\$1,079.86		\$5,067.35
200 Personnel Services – Employee Benefits				
220 Social Security Contributions	305.06	82.24		387.30
230 PSERS Retirement Contributions	1,333.04	359.37		1,692.41
250 Unemployment Compensation	0.37	0.05		0.42
260 Workers' Compensation	55.83	26.70		82.53
Total Personnel Services – Employee Benefits	\$1,694.30	\$468.36		\$2,162.66
500 Other Purchased Services				
510 Student Transportation Services	2,580.00			2,580.00
Total Other Purchased Services	\$2,580.00			\$2,580.00
600 Supplies				
620 Energy		186.72		186.72
Total Supplies		\$186.72		\$186.72
Total 1400 Other Instructional Programs – Elementary / Secondary	\$8,261.79	\$1,734.94		\$9,996.73

General Fund (10)

1410 Drivers' Education

100 Personnel Services – Salaries

	<u>Elementary</u>	<u>Secondary</u>	<u>Federal</u>	<u>Total</u>
100 Personnel Services – Salaries		1,075.00		1,075.00
Total Personnel Services – Salaries		\$1,075.00		\$1,075.00

200 Personnel Services – Employee Benefits

220 Social Security Contributions		82.24		82.24
230 PSERS Retirement Contributions		359.37		359.37
250 Unemployment Compensation		0.04		0.04
260 Workers' Compensation		26.70		26.70
Total Personnel Services – Employee Benefits		\$468.35		\$468.35

600 Supplies

620 Energy		186.72		186.72
Total Supplies		\$186.72		\$186.72

Total 1410 Drivers' Education		\$1,730.07		\$1,730.07
--------------------------------------	--	-------------------	--	-------------------

General Fund (10)

	<u>Elementary</u>	<u>Secondary</u>	<u>Federal</u>	<u>Total</u>
1420 Summer School				
100 Personnel Services – Salaries				
100 Personnel Services – Salaries	3,987.49			3,987.49
Total Personnel Services – Salaries	\$3,987.49			\$3,987.49
200 Personnel Services – Employee Benefits				
220 Social Security Contributions	305.06			305.06
230 PSERS Retirement Contributions	1,333.04			1,333.04
250 Unemployment Compensation	0.36			0.36
260 Workers' Compensation	50.97			50.97
Total Personnel Services – Employee Benefits	\$1,689.43			\$1,689.43
500 Other Purchased Services				
510 Student Transportation Services	2,580.00			2,580.00
Total Other Purchased Services	\$2,580.00			\$2,580.00
Total 1420 Summer School	\$8,256.92			\$8,256.92

General Fund (10)

1430 Homebound Instruction

100 Personnel Services – Salaries

100 Personnel Services – Salaries

Total Personnel Services – Salaries

200 Personnel Services – Employee Benefits

250 Unemployment Compensation

260 Workers' Compensation

Total Personnel Services – Employee Benefits

Total 1430 Homebound Instruction

	<u>Elementary</u>	<u>Secondary</u>	<u>Federal</u>	<u>Total</u>
100 Personnel Services – Salaries		4.86		4.86
Total Personnel Services – Salaries		\$4.86		\$4.86
200 Personnel Services – Employee Benefits				
250 Unemployment Compensation	0.01	0.01		0.02
260 Workers' Compensation	4.86			4.86
Total Personnel Services – Employee Benefits	\$4.87	\$0.01		\$4.88
Total 1430 Homebound Instruction	\$4.87	\$4.87		\$9.74

General Fund (10)

2000 Support Services

Total

100 Personnel Services – Salaries

100 Personnel Services – Salaries 1,561,928.20

Total Personnel Services – Salaries \$1,561,928.20

200 Personnel Services – Employee Benefits

210 Group Insurance – Contracted Provider 519,506.73

220 Social Security Contributions 120,303.77

230 PSERS Retirement Contributions 511,646.95

240 Tuition Reimbursement 6,424.00

250 Unemployment Compensation 305.61

260 Workers' Compensation 7,245.18

Total Personnel Services – Employee Benefits \$1,165,432.24

300 Purchased Professional and Technical Services

329 Professional Educational Services – Other 4,743.16

330 Other Professional Services 88,066.03

360 Employee Training and Development Services 9,341.00

Total Purchased Professional and Technical Services \$102,150.19

400 Purchased Property Services

410 Cleaning Services 10,214.21

420 Utility Services 59,230.94

430 Repairs and Maintenance Services 55,283.30

440 Rentals 2,477.00

Total Purchased Property Services \$127,205.45

500 Other Purchased Services

510 Student Transportation Services 764.36

513 Contracted Carriers 596,539.04

520 Insurance – General 407.00

521 Fire Insurance 32,732.09

522 Automotive Liability Insurance 4,552.10

523 General Property and Liability Insurance 6,104.81

530 Communications 31,023.41

549 Other Advertising/Public Relations 3,973.14

550 Printing and Binding 1,831.12

580 Travel 17,787.83

595 IU Payments By Withholding 4,730.30

Total Other Purchased Services \$700,445.20

600 Supplies

610 General Supplies 163,495.34

620 Energy 146,021.47

640 Books and Periodicals 32,596.92

650 Supplies & Fees – Technology Related (1,275.00)

Total Supplies \$340,838.73

700 Property

752 Capital Equipment – Original and Additional 34,760.43

General Fund (10)

2000 Support Services

Total

700 Property

758 Capitalized Technology Software - Original	4,000.00
762 Capitalized Equipment - Replacement	41,116.79
766 Capitalized Technology Equipment - Replacement	54,836.65

Total Property	\$134,713.87
-----------------------	---------------------

800 Other Objects

810 Dues and Fees	12,915.05
-------------------	-----------

Total Other Objects	\$12,915.05
----------------------------	--------------------

Total 2000 Support Services	\$4,145,628.93
------------------------------------	-----------------------

General Fund (10)

	<u>Elementary</u>	<u>Secondary</u>	<u>Federal</u>	<u>Total</u>
2100 Support Services – Students				
100 Personnel Services – Salaries				
100 Personnel Services – Salaries	131,262.52	140,803.64		272,066.16
Total Personnel Services – Salaries	\$131,262.52	\$140,803.64		\$272,066.16
200 Personnel Services – Employee Benefits				
210 Group Insurance – Contracted Provider	47,304.46	25,976.98		73,281.44
220 Social Security Contributions	10,041.71	10,771.49		20,813.20
230 PSERS Retirement Contributions	43,340.28	45,226.12		88,566.40
250 Unemployment Compensation	21.85	21.92		43.77
260 Workers' Compensation	727.93	749.78		1,477.71
Total Personnel Services – Employee Benefits	\$101,436.23	\$82,746.29		\$184,182.52
300 Purchased Professional and Technical Services				
330 Other Professional Services		750.00		8,850.00
Total Purchased Professional and Technical Services		\$750.00		\$8,850.00
400 Purchased Property Services				
430 Repairs and Maintenance Services		259.10		259.10
Total Purchased Property Services		\$259.10		\$259.10
500 Other Purchased Services				
510 Student Transportation Services	181.44	582.92		764.36
550 Printing and Binding		14.34		14.34
580 Travel	1,274.05	1,466.52		2,740.57
Total Other Purchased Services	\$1,455.49	\$2,063.78		\$3,519.27
600 Supplies				
610 General Supplies	2,004.47	3,368.54	822.47	6,195.48
640 Books and Periodicals	364.78	364.78		729.56
Total Supplies	\$2,369.25	\$3,733.32	\$822.47	\$6,925.04
700 Property				
762 Capitalized Equipment - Replacement	437.01	1,373.80		1,810.81
Total Property	\$437.01	\$1,373.80		\$1,810.81
Total 2100 Support Services – Students	\$236,960.50	\$231,729.93	\$822.47	\$477,612.90

General Fund (10)

2120 Guidance Services

	<u>Elementary</u>	<u>Secondary</u>	<u>Federal</u>	<u>Total</u>
100 Personnel Services – Salaries				
100 Personnel Services – Salaries	67,556.00	77,097.11		144,653.11
Total Personnel Services – Salaries	\$67,556.00	\$77,097.11		\$144,653.11
200 Personnel Services – Employee Benefits				
210 Group Insurance – Contracted Provider	22,262.64	935.16		23,197.80
220 Social Security Contributions	5,168.24	5,898.01		11,066.25
230 PSERS Retirement Contributions	22,584.08	24,469.91		47,053.99
250 Unemployment Compensation	7.48	7.53		15.01
260 Workers' Compensation	351.84	373.68		725.52
Total Personnel Services – Employee Benefits	\$50,374.28	\$31,684.29		\$82,058.57
300 Purchased Professional and Technical Services				
330 Other Professional Services		750.00		750.00
Total Purchased Professional and Technical Services		\$750.00		\$750.00
400 Purchased Property Services				
430 Repairs and Maintenance Services		259.10		259.10
Total Purchased Property Services		\$259.10		\$259.10
500 Other Purchased Services				
510 Student Transportation Services	181.44	582.92		764.36
550 Printing and Binding		14.34		14.34
580 Travel	185.31	377.75		563.06
Total Other Purchased Services	\$366.75	\$975.01		\$1,341.76
600 Supplies				
610 General Supplies	846.61	2,210.67		3,057.28
Total Supplies	\$846.61	\$2,210.67		\$3,057.28
700 Property				
762 Capitalized Equipment - Replacement		936.79		936.79
Total Property		\$936.79		\$936.79
Total 2120 Guidance Services	\$119,143.64	\$113,912.97		\$233,056.61

General Fund (10)

	<u>Elementary</u>	<u>Secondary</u>	<u>Federal</u>	<u>Total</u>
2140 Psychological Services				
100 Personnel Services – Salaries				
100 Personnel Services – Salaries	29,396.44	29,396.44		58,792.88
Total Personnel Services – Salaries	\$29,396.44	\$29,396.44		\$58,792.88
200 Personnel Services – Employee Benefits				
210 Group Insurance – Contracted Provider	8,530.72	8,530.71		17,061.43
220 Social Security Contributions	2,248.78	2,248.78		4,497.56
230 PSERS Retirement Contributions	9,453.50	9,453.50		18,907.00
250 Unemployment Compensation	7.25	7.26		14.51
260 Workers' Compensation	195.33	195.33		390.66
Total Personnel Services – Employee Benefits	\$20,435.58	\$20,435.58		\$40,871.16
500 Other Purchased Services				
580 Travel	580.46	580.47		1,160.93
Total Other Purchased Services	\$580.46	\$580.47		\$1,160.93
600 Supplies				
610 General Supplies	1,135.45	1,135.45		2,270.90
Total Supplies	\$1,135.45	\$1,135.45		\$2,270.90
Total 2140 Psychological Services	\$51,547.93	\$51,547.94		\$103,095.87

General Fund (10)

	<u>Elementary</u>	<u>Secondary</u>	<u>Federal</u>	<u>Total</u>
2150 Speech Pathology and Audiology Services				
100 Personnel Services – Salaries				
100 Personnel Services – Salaries	19,815.08	19,815.09		39,630.17
Total Personnel Services – Salaries	\$19,815.08	\$19,815.09		\$39,630.17
200 Personnel Services – Employee Benefits				
210 Group Insurance – Contracted Provider	6,075.24	6,075.25		12,150.49
220 Social Security Contributions	1,515.81	1,515.81		3,031.62
230 PSERS Retirement Contributions	6,624.17	6,624.18		13,248.35
250 Unemployment Compensation	3.65	3.65		7.30
260 Workers' Compensation	107.97	107.98		215.95
Total Personnel Services – Employee Benefits	\$14,326.84	\$14,326.87		\$28,653.71
500 Other Purchased Services				
580 Travel	463.56	463.57		927.13
Total Other Purchased Services	\$463.56	\$463.57		\$927.13
600 Supplies				
610 General Supplies	12.64	12.64	822.47	847.75
640 Books and Periodicals	364.78	364.78		729.56
Total Supplies	\$377.42	\$377.42	\$822.47	\$1,577.31
700 Property				
762 Capitalized Equipment - Replacement	157.02	157.02		314.04
Total Property	\$157.02	\$157.02		\$314.04
Total 2150 Speech Pathology and Audiology Services	\$35,139.92	\$35,139.97	\$822.47	\$71,102.36

General Fund (10)

2160 Social Work Services

Elementary

Secondary

Federal

Total

300 Purchased Professional and Technical Services

330 Other Professional Services

8,100.00

Total Purchased Professional and Technical Services

\$8,100.00

Total 2160 Social Work Services

\$8,100.00

General Fund (10)

	<u>Elementary</u>	<u>Secondary</u>	<u>Federal</u>	<u>Total</u>
2190 Other Student Services				
100 Personnel Services – Salaries				
100 Personnel Services – Salaries	14,495.00	14,495.00		28,990.00
Total Personnel Services – Salaries	\$14,495.00	\$14,495.00		\$28,990.00
200 Personnel Services – Employee Benefits				
210 Group Insurance – Contracted Provider	10,435.86	10,435.86		20,871.72
220 Social Security Contributions	1,108.88	1,108.89		2,217.77
230 PSERS Retirement Contributions	4,678.53	4,678.53		9,357.06
250 Unemployment Compensation	3.47	3.48		6.95
260 Workers' Compensation	72.79	72.79		145.58
Total Personnel Services – Employee Benefits	\$16,299.53	\$16,299.55		\$32,599.08
500 Other Purchased Services				
580 Travel	44.72	44.73		89.45
Total Other Purchased Services	\$44.72	\$44.73		\$89.45
600 Supplies				
610 General Supplies	9.77	9.78		19.55
Total Supplies	\$9.77	\$9.78		\$19.55
700 Property				
762 Capitalized Equipment - Replacement	279.99	279.99		559.98
Total Property	\$279.99	\$279.99		\$559.98
Total 2190 Other Student Services	\$31,129.01	\$31,129.05		\$62,258.06

General Fund (10)

	<u>Elementary</u>	<u>Secondary</u>	<u>Federal</u>	<u>Total</u>
2200 Support Services – Instructional Staff				
100 Personnel Services – Salaries				
100 Personnel Services – Salaries	51,966.86			51,966.86
Total Personnel Services – Salaries	\$51,966.86			\$51,966.86
200 Personnel Services – Employee Benefits				
210 Group Insurance – Contracted Provider	6,678.84			6,678.84
220 Social Security Contributions	3,975.38			3,975.38
230 PSERS Retirement Contributions	17,372.45			17,372.45
240 Tuition Reimbursement		4,800.00		4,800.00
250 Unemployment Compensation	16.26			16.26
260 Workers' Compensation	160.16			160.16
Total Personnel Services – Employee Benefits	\$28,203.09	\$4,800.00		\$33,003.09
300 Purchased Professional and Technical Services				
329 Professional Educational Services – Other	721.54			721.54
360 Employee Training and Development Services	4,264.00	1,948.00		6,212.00
Total Purchased Professional and Technical Services	\$4,985.54	\$1,948.00		\$6,933.54
500 Other Purchased Services				
580 Travel	1,625.84	672.26	2,281.61	4,579.71
Total Other Purchased Services	\$1,625.84	\$672.26	\$2,281.61	\$4,579.71
600 Supplies				
610 General Supplies	1,430.36	440.57		1,870.93
640 Books and Periodicals	6,364.23	1,349.39		7,713.62
Total Supplies	\$7,794.59	\$1,789.96		\$9,584.55
Total 2200 Support Services – Instructional Staff	\$94,575.92	\$9,210.22	\$2,281.61	\$106,067.75

General Fund (10)

	<u>Elementary</u>	<u>Secondary</u>	<u>Federal</u>	<u>Total</u>
2250 School Library Services				
100 Personnel Services – Salaries				
100 Personnel Services – Salaries	51,966.86			51,966.86
Total Personnel Services – Salaries	\$51,966.86			\$51,966.86
200 Personnel Services – Employee Benefits				
210 Group Insurance – Contracted Provider	6,678.84			6,678.84
220 Social Security Contributions	3,975.38			3,975.38
230 PSERS Retirement Contributions	17,372.45			17,372.45
250 Unemployment Compensation	16.26			16.26
260 Workers' Compensation	160.16			160.16
Total Personnel Services – Employee Benefits	\$28,203.09			\$28,203.09
300 Purchased Professional and Technical Services				
329 Professional Educational Services – Other	721.54			721.54
Total Purchased Professional and Technical Services	\$721.54			\$721.54
600 Supplies				
610 General Supplies	1,078.76			1,078.76
640 Books and Periodicals	6,364.23	1,349.39		7,713.62
Total Supplies	\$7,442.99	\$1,349.39		\$8,792.38
Total 2250 School Library Services	\$88,334.48	\$1,349.39		\$89,683.87

General Fund (10)

2270 Instructional Staff Professional Development Services	<u>Elementary</u>	<u>Secondary</u>	<u>Federal</u>	<u>Total</u>
200 Personnel Services – Employee Benefits				
240 Tuition Reimbursement		4,800.00		4,800.00
Total Personnel Services – Employee Benefits		\$4,800.00		\$4,800.00
300 Purchased Professional and Technical Services				
360 Employee Training and Development Services	4,264.00	1,948.00		6,212.00
Total Purchased Professional and Technical Services	\$4,264.00	\$1,948.00		\$6,212.00
500 Other Purchased Services				
580 Travel	1,625.84	672.26	2,281.61	4,579.71
Total Other Purchased Services	\$1,625.84	\$672.26	\$2,281.61	\$4,579.71
600 Supplies				
610 General Supplies	351.60	440.57		792.17
Total Supplies	\$351.60	\$440.57		\$792.17
Total 2270 Instructional Staff Professional Development Services	\$6,241.44	\$7,860.83	\$2,281.61	\$16,383.88

General Fund (10)

	<u>Elementary</u>	<u>Secondary</u>	<u>Federal</u>	<u>Total</u>
2300 Support Services – Administration				
100 Personnel Services – Salaries				
100 Personnel Services – Salaries	147,540.64	106,673.00		439,462.83
Total Personnel Services – Salaries	\$147,540.64	\$106,673.00		\$439,462.83
200 Personnel Services – Employee Benefits				
210 Group Insurance – Contracted Provider	48,153.76	16,743.51		141,361.44
220 Social Security Contributions	11,295.09	8,179.69		33,684.94
230 PSERS Retirement Contributions	48,370.26	34,291.94		137,189.90
250 Unemployment Compensation	21.73	14.94		53.72
260 Workers' Compensation	747.32	691.52		2,326.79
Total Personnel Services – Employee Benefits	\$108,588.16	\$59,921.60		\$314,616.79
300 Purchased Professional and Technical Services				
329 Professional Educational Services – Other	1,154.04	2,586.33		3,740.37
330 Other Professional Services				42,107.82
Total Purchased Professional and Technical Services	\$1,154.04	\$2,586.33		\$45,848.19
400 Purchased Property Services				
430 Repairs and Maintenance Services	989.17	9,910.52		10,899.69
440 Rentals				1,008.00
Total Purchased Property Services	\$989.17	\$9,910.52		\$11,907.69
500 Other Purchased Services				
520 Insurance – General				407.00
530 Communications	859.00	971.96		1,830.96
549 Other Advertising/Public Relations				3,973.14
580 Travel	1,143.75	1,073.42		6,734.10
Total Other Purchased Services	\$2,002.75	\$2,045.38		\$12,945.20
600 Supplies				
610 General Supplies	34,577.78	5,623.71		46,244.60
620 Energy				2.55
640 Books and Periodicals	10,426.26	11,227.50		21,653.76
Total Supplies	\$45,004.04	\$16,851.21		\$67,900.91
700 Property				
762 Capitalized Equipment - Replacement	1,349.88			1,349.88
Total Property	\$1,349.88			\$1,349.88
800 Other Objects				
810 Dues and Fees	1,595.00			10,916.30
Total Other Objects	\$1,595.00			\$10,916.30
Total 2300 Support Services – Administration	\$308,223.68	\$197,988.04		\$904,947.79

General Fund (10)

2310 Board Services

Elementary

Secondary

Federal

Total

100 Personnel Services – Salaries

100 Personnel Services – Salaries

1,425.06

Total Personnel Services – Salaries

\$1,425.06

200 Personnel Services – Employee Benefits

220 Social Security Contributions

108.94

230 PSERS Retirement Contributions

476.32

250 Unemployment Compensation

0.23

260 Workers' Compensation

29.01

Total Personnel Services – Employee Benefits

\$614.50

300 Purchased Professional and Technical Services

330 Other Professional Services

9,800.00

Total Purchased Professional and Technical Services

\$9,800.00

500 Other Purchased Services

520 Insurance – General

407.00

549 Other Advertising/Public Relations

3,973.14

580 Travel

290.97

Total Other Purchased Services

\$4,671.11

600 Supplies

610 General Supplies

124.17

Total Supplies

\$124.17

800 Other Objects

810 Dues and Fees

5,871.90

Total Other Objects

\$5,871.90

Total 2310 Board Services

\$22,506.74

General Fund (10)

	<u>Elementary</u>	<u>Secondary</u>	<u>Federal</u>	<u>Total</u>
2330 Tax Assessment and Collection Services				
100 Personnel Services – Salaries				
100 Personnel Services – Salaries				18,378.50
Total Personnel Services – Salaries				\$18,378.50
200 Personnel Services – Employee Benefits				
220 Social Security Contributions				1,405.96
Total Personnel Services – Employee Benefits				\$1,405.96
300 Purchased Professional and Technical Services				
330 Other Professional Services				13,754.67
Total Purchased Professional and Technical Services				\$13,754.67
600 Supplies				
610 General Supplies				2,447.68
Total Supplies				\$2,447.68
Total 2330 Tax Assessment and Collection Services				\$35,986.81

General Fund (10)

	<u>Elementary</u>	<u>Secondary</u>	<u>Federal</u>	<u>Total</u>
2350 Legal and Accounting Services				
200 Personnel Services – Employee Benefits				
210 Group Insurance – Contracted Provider				8,277.54
Total Personnel Services – Employee Benefits				\$8,277.54
300 Purchased Professional and Technical Services				
330 Other Professional Services				18,553.15
Total Purchased Professional and Technical Services				\$18,553.15
600 Supplies				
610 General Supplies				1,224.00
Total Supplies				\$1,224.00
800 Other Objects				
810 Dues and Fees				550.00
Total Other Objects				\$550.00
Total 2350 Legal and Accounting Services				\$28,604.69

General Fund (10)

2360 Office of the Superintendent / Executive Director Services

	<u>Elementary</u>	<u>Secondary</u>	<u>Federal</u>	<u>Total</u>
100 Personnel Services – Salaries				
100 Personnel Services – Salaries				143,235.65
Total Personnel Services – Salaries				\$143,235.65
200 Personnel Services – Employee Benefits				
210 Group Insurance – Contracted Provider				53,013.45
220 Social Security Contributions				10,989.20
230 PSERS Retirement Contributions				46,626.56
250 Unemployment Compensation				12.45
260 Workers' Compensation				735.20
Total Personnel Services – Employee Benefits				\$111,376.86
400 Purchased Property Services				
440 Rentals				1,008.00
Total Purchased Property Services				\$1,008.00
500 Other Purchased Services				
530 Communications	150.00	150.00		300.00
580 Travel				1,392.89
Total Other Purchased Services	\$150.00	\$150.00		\$1,692.89
600 Supplies				
610 General Supplies				1,947.47
620 Energy				2.55
Total Supplies				\$1,950.02
800 Other Objects				
810 Dues and Fees				2,899.40
Total Other Objects				\$2,899.40
Total 2360 Office of the Superintendent / Executive Director Services	\$150.00	\$150.00		\$262,162.82

General Fund (10)

	<u>Elementary</u>	<u>Secondary</u>	<u>Federal</u>	<u>Total</u>
2380 Office of the Principal Services				
100 Personnel Services – Salaries				
100 Personnel Services – Salaries	147,540.64	106,673.00		254,213.64
Total Personnel Services – Salaries	\$147,540.64	\$106,673.00		\$254,213.64
200 Personnel Services – Employee Benefits				
210 Group Insurance – Contracted Provider	48,153.76	16,743.51		64,897.27
220 Social Security Contributions	11,295.09	8,179.69		19,474.78
230 PSERS Retirement Contributions	48,370.26	34,291.94		82,662.20
250 Unemployment Compensation	21.73	14.94		36.67
260 Workers' Compensation	747.32	691.52		1,438.84
Total Personnel Services – Employee Benefits	\$108,588.16	\$59,921.60		\$168,509.76
300 Purchased Professional and Technical Services				
329 Professional Educational Services – Other	1,154.04	2,586.33		3,740.37
Total Purchased Professional and Technical Services	\$1,154.04	\$2,586.33		\$3,740.37
400 Purchased Property Services				
430 Repairs and Maintenance Services	989.17	9,910.52		10,899.69
Total Purchased Property Services	\$989.17	\$9,910.52		\$10,899.69
500 Other Purchased Services				
530 Communications	709.00	821.96		1,530.96
580 Travel	1,143.75	1,073.42		2,217.17
Total Other Purchased Services	\$1,852.75	\$1,895.38		\$3,748.13
600 Supplies				
610 General Supplies	34,577.78	5,623.71		40,201.49
640 Books and Periodicals	10,426.26	11,227.50		21,653.76
Total Supplies	\$45,004.04	\$16,851.21		\$61,855.25
700 Property				
762 Capitalized Equipment - Replacement	1,349.88			1,349.88
Total Property	\$1,349.88			\$1,349.88
800 Other Objects				
810 Dues and Fees	1,595.00			1,595.00
Total Other Objects	\$1,595.00			\$1,595.00
Total 2380 Office of the Principal Services	\$308,073.68	\$197,838.04		\$505,911.72

General Fund (10)

2390 Other Administration Services

Elementary

Secondary

Federal

Total

100 Personnel Services – Salaries

100 Personnel Services – Salaries

22,209.98

Total Personnel Services – Salaries

\$22,209.98

200 Personnel Services – Employee Benefits

210 Group Insurance – Contracted Provider

15,173.18

220 Social Security Contributions

1,706.06

230 PSERS Retirement Contributions

7,424.82

250 Unemployment Compensation

4.37

260 Workers' Compensation

123.74

Total Personnel Services – Employee Benefits

\$24,432.17

500 Other Purchased Services

580 Travel

2,833.07

Total Other Purchased Services

\$2,833.07

600 Supplies

610 General Supplies

299.79

Total Supplies

\$299.79

Total 2390 Other Administration Services

\$49,775.01

General Fund (10)

	<u>Elementary</u>	<u>Secondary</u>	<u>Federal</u>	<u>Total</u>
2400 Support Services – Pupil Health				
100 Personnel Services – Salaries				
100 Personnel Services – Salaries				74,340.05
Total Personnel Services – Salaries				\$74,340.05
200 Personnel Services – Employee Benefits				
210 Group Insurance – Contracted Provider				37,616.28
220 Social Security Contributions				5,686.90
230 PSERS Retirement Contributions				24,851.92
250 Unemployment Compensation				17.05
260 Workers' Compensation				359.13
Total Personnel Services – Employee Benefits				\$68,531.28
300 Purchased Professional and Technical Services				
330 Other Professional Services				8,893.36
Total Purchased Professional and Technical Services				\$8,893.36
400 Purchased Property Services				
430 Repairs and Maintenance Services				295.00
Total Purchased Property Services				\$295.00
500 Other Purchased Services				
580 Travel				1,106.84
Total Other Purchased Services				\$1,106.84
600 Supplies				
610 General Supplies				4,456.15
Total Supplies				\$4,456.15
Total 2400 Support Services – Pupil Health				\$157,622.68

General Fund (10)

2440 Nursing Services

	<u>Elementary</u>	<u>Secondary</u>	<u>Federal</u>	<u>Total</u>
100 Personnel Services – Salaries				
100 Personnel Services – Salaries				74,340.05
Total Personnel Services – Salaries				\$74,340.05
200 Personnel Services – Employee Benefits				
210 Group Insurance – Contracted Provider				37,616.28
220 Social Security Contributions				5,686.90
230 PSERS Retirement Contributions				24,851.92
250 Unemployment Compensation				17.05
260 Workers' Compensation				359.13
Total Personnel Services – Employee Benefits				\$68,531.28
300 Purchased Professional and Technical Services				
330 Other Professional Services				8,893.36
Total Purchased Professional and Technical Services				\$8,893.36
400 Purchased Property Services				
430 Repairs and Maintenance Services				295.00
Total Purchased Property Services				\$295.00
500 Other Purchased Services				
580 Travel				1,106.84
Total Other Purchased Services				\$1,106.84
600 Supplies				
610 General Supplies				4,456.15
Total Supplies				\$4,456.15
Total 2440 Nursing Services				\$157,622.68

General Fund (10)

2500 Support Services – Business

Elementary

Secondary

Federal

Total

100 Personnel Services – Salaries

100 Personnel Services – Salaries

82,474.80

Total Personnel Services – Salaries

\$82,474.80

200 Personnel Services – Employee Benefits

210 Group Insurance – Contracted Provider

52,000.55

220 Social Security Contributions

6,313.26

230 PSERS Retirement Contributions

27,571.42

250 Unemployment Compensation

11.54

260 Workers' Compensation

446.45

Total Personnel Services – Employee Benefits

\$86,343.22

300 Purchased Professional and Technical Services

330 Other Professional Services

1,933.48

Total Purchased Professional and Technical Services

\$1,933.48

400 Purchased Property Services

430 Repairs and Maintenance Services

7,919.70

Total Purchased Property Services

\$7,919.70

500 Other Purchased Services

530 Communications

2,836.18

550 Printing and Binding

1,816.78

580 Travel

721.38

Total Other Purchased Services

\$5,374.34

600 Supplies

610 General Supplies

2,157.44

Total Supplies

\$2,157.44

800 Other Objects

810 Dues and Fees

1,148.75

Total Other Objects

\$1,148.75

Total 2500 Support Services – Business

\$187,351.73

General Fund (10)

2510 Fiscal Services

Elementary

Secondary

Federal

Total

100 Personnel Services – Salaries

100 Personnel Services – Salaries

82,474.80

Total Personnel Services – Salaries

\$82,474.80

200 Personnel Services – Employee Benefits

210 Group Insurance – Contracted Provider

52,000.55

220 Social Security Contributions

6,313.26

230 PSERS Retirement Contributions

27,571.42

250 Unemployment Compensation

11.54

260 Workers' Compensation

446.45

Total Personnel Services – Employee Benefits

\$86,343.22

300 Purchased Professional and Technical Services

330 Other Professional Services

1,933.48

Total Purchased Professional and Technical Services

\$1,933.48

400 Purchased Property Services

430 Repairs and Maintenance Services

7,919.70

Total Purchased Property Services

\$7,919.70

500 Other Purchased Services

530 Communications

2,836.18

550 Printing and Binding

1,816.78

580 Travel

721.38

Total Other Purchased Services

\$5,374.34

600 Supplies

610 General Supplies

2,157.44

Total Supplies

\$2,157.44

800 Other Objects

810 Dues and Fees

1,148.75

Total Other Objects

\$1,148.75

Total 2510 Fiscal Services

\$187,351.73

General Fund (10)

	<u>Elementary</u>	<u>Secondary</u>	<u>Federal</u>	<u>Total</u>
2511 Supervision of Fiscal Services - Head of Component				
100 Personnel Services – Salaries				
100 Personnel Services – Salaries				82,474.80
Total Personnel Services – Salaries				\$82,474.80
200 Personnel Services – Employee Benefits				
210 Group Insurance – Contracted Provider				52,000.55
220 Social Security Contributions				6,313.26
230 PSERS Retirement Contributions				27,571.42
250 Unemployment Compensation				11.54
260 Workers' Compensation				446.45
Total Personnel Services – Employee Benefits				\$86,343.22
300 Purchased Professional and Technical Services				
330 Other Professional Services				1,933.48
Total Purchased Professional and Technical Services				\$1,933.48
400 Purchased Property Services				
430 Repairs and Maintenance Services				7,919.70
Total Purchased Property Services				\$7,919.70
500 Other Purchased Services				
530 Communications				2,836.18
550 Printing and Binding				1,816.78
580 Travel				721.38
Total Other Purchased Services				\$5,374.34
600 Supplies				
610 General Supplies				2,157.44
Total Supplies				\$2,157.44
800 Other Objects				
810 Dues and Fees				1,148.75
Total Other Objects				\$1,148.75
Total 2511 Supervision of Fiscal Services - Head of Component				\$187,351.73

General Fund (10)

	<u>Elementary</u>	<u>Secondary</u>	<u>Federal</u>	<u>Total</u>
2600 Operation and Maintenance of Plant Services				
100 Personnel Services – Salaries				
100 Personnel Services – Salaries				520,537.02
Total Personnel Services – Salaries				\$520,537.02
200 Personnel Services – Employee Benefits				
210 Group Insurance – Contracted Provider				157,147.91
220 Social Security Contributions				40,556.97
230 PSERS Retirement Contributions				175,617.61
250 Unemployment Compensation				146.94
260 Workers' Compensation				1,885.32
Total Personnel Services – Employee Benefits				\$375,354.75
300 Purchased Professional and Technical Services				
330 Other Professional Services				26,281.37
Total Purchased Professional and Technical Services				\$26,281.37
400 Purchased Property Services				
410 Cleaning Services				10,214.21
420 Utility Services				59,230.94
430 Repairs and Maintenance Services				34,679.81
440 Rentals				1,469.00
Total Purchased Property Services				\$105,593.96
500 Other Purchased Services				
521 Fire Insurance				32,732.09
522 Automotive Liability Insurance				4,552.10
523 General Property and Liability Insurance				6,104.81
530 Communications				26,356.27
Total Other Purchased Services				\$69,745.27
600 Supplies				
610 General Supplies	32,593.81	46,457.16		79,050.97
620 Energy				146,018.92
Total Supplies	\$32,593.81	\$46,457.16		\$225,069.89
700 Property				
752 Capital Equipment – Original and Additional				34,760.43
762 Capitalized Equipment - Replacement				35,161.10
Total Property				\$69,921.53
800 Other Objects				
810 Dues and Fees				850.00
Total Other Objects				\$850.00
Total 2600 Operation and Maintenance of Plant Services	\$32,593.81	\$46,457.16		\$1,393,353.79

General Fund (10)

2610 Supervision of Operation and Maintenance of Plant Services

Elementary

Secondary

Federal

Total

100 Personnel Services – Salaries

100 Personnel Services – Salaries

90,900.60

Total Personnel Services – Salaries

\$90,900.60

200 Personnel Services – Employee Benefits

210 Group Insurance – Contracted Provider

48,680.57

220 Social Security Contributions

7,089.12

230 PSERS Retirement Contributions

30,949.60

250 Unemployment Compensation

14.39

260 Workers' Compensation

439.19

Total Personnel Services – Employee Benefits

\$87,172.87

Total 2610 Supervision of Operation and Maintenance of Plant Services

\$178,073.47

General Fund (10)

2611 Supervision of Operation and Maintenance of Plant Services – Head of Component

Elementary

Secondary

Federal

Total

100 Personnel Services – Salaries

100 Personnel Services – Salaries

43,475.64

Total Personnel Services – Salaries

\$43,475.64

200 Personnel Services – Employee Benefits

210 Group Insurance – Contracted Provider

24,700.92

220 Social Security Contributions

3,332.76

230 PSERS Retirement Contributions

14,534.00

250 Unemployment Compensation

7.30

260 Workers' Compensation

223.24

Total Personnel Services – Employee Benefits

\$42,798.22

Total 2611 Supervision of Operation and Maintenance of Plant Services – Head of Component

\$86,273.86

General Fund (10)

2619 Supervision of Operation and Maintenance of Plant Services – All Other Supervision

Elementary

Secondary

Federal

Total

100 Personnel Services – Salaries

100 Personnel Services – Salaries

47,424.96

Total Personnel Services – Salaries

\$47,424.96

200 Personnel Services – Employee Benefits

210 Group Insurance – Contracted Provider

23,979.65

220 Social Security Contributions

3,756.36

230 PSERS Retirement Contributions

16,415.60

250 Unemployment Compensation

7.09

260 Workers' Compensation

215.95

Total Personnel Services – Employee Benefits

\$44,374.65

Total 2619 Supervision of Operation and Maintenance of Plant Services – All Other Supervision

\$91,799.61

General Fund (10)

	<u>Elementary</u>	<u>Secondary</u>	<u>Federal</u>	<u>Total</u>
2620 Operation of Buildings Services				
100 Personnel Services – Salaries				
100 Personnel Services – Salaries				347,324.98
Total Personnel Services – Salaries				\$347,324.98
200 Personnel Services – Employee Benefits				
210 Group Insurance – Contracted Provider				108,094.56
220 Social Security Contributions				26,570.21
230 PSERS Retirement Contributions				114,525.96
250 Unemployment Compensation				90.67
260 Workers' Compensation				1,446.13
Total Personnel Services – Employee Benefits				\$250,727.53
300 Purchased Professional and Technical Services				
330 Other Professional Services				26,281.37
Total Purchased Professional and Technical Services				\$26,281.37
400 Purchased Property Services				
410 Cleaning Services				10,214.21
420 Utility Services				59,230.94
430 Repairs and Maintenance Services				34,679.81
440 Rentals				1,469.00
Total Purchased Property Services				\$105,593.96
500 Other Purchased Services				
521 Fire Insurance				32,732.09
522 Automotive Liability Insurance				4,552.10
523 General Property and Liability Insurance				2,921.81
530 Communications				26,356.27
Total Other Purchased Services				\$66,562.27
600 Supplies				
610 General Supplies	31,793.49	45,656.83		77,450.32
620 Energy				146,018.92
Total Supplies	\$31,793.49	\$45,656.83		\$223,469.24
700 Property				
762 Capitalized Equipment - Replacement				35,161.10
Total Property				\$35,161.10
Total 2620 Operation of Buildings Services	\$31,793.49	\$45,656.83		\$1,055,120.45

General Fund (10)

	<u>Elementary</u>	<u>Secondary</u>	<u>Federal</u>	<u>Total</u>
2660 Safety and Security Services				
100 Personnel Services – Salaries				
100 Personnel Services – Salaries				82,311.44
Total Personnel Services – Salaries				\$82,311.44
200 Personnel Services – Employee Benefits				
210 Group Insurance – Contracted Provider				372.78
220 Social Security Contributions				6,897.64
230 PSERS Retirement Contributions				30,142.05
250 Unemployment Compensation				41.88
Total Personnel Services – Employee Benefits				\$37,454.35
500 Other Purchased Services				
523 General Property and Liability Insurance				3,183.00
Total Other Purchased Services				\$3,183.00
600 Supplies				
610 General Supplies	800.32	800.33		1,600.65
Total Supplies	\$800.32	\$800.33		\$1,600.65
700 Property				
752 Capital Equipment – Original and Additional				34,760.43
Total Property				\$34,760.43
800 Other Objects				
810 Dues and Fees				850.00
Total Other Objects				\$850.00
Total 2660 Safety and Security Services	\$800.32	\$800.33		\$160,159.87

General Fund (10)

2700 Student Transportation Services

Elementary

Secondary

Federal

Total

100 Personnel Services – Salaries

100 Personnel Services – Salaries

5,800.06

Total Personnel Services – Salaries

\$5,800.06

200 Personnel Services – Employee Benefits

210 Group Insurance – Contracted Provider

2,443.95

220 Social Security Contributions

443.56

230 PSERS Retirement Contributions

1,939.07

250 Unemployment Compensation

0.76

260 Workers' Compensation

31.56

Total Personnel Services – Employee Benefits

\$4,858.90

500 Other Purchased Services

513 Contracted Carriers

63,928.51

596,539.04

Total Other Purchased Services

\$63,928.51

\$596,539.04

600 Supplies

610 General Supplies

482.96

Total Supplies

\$482.96

700 Property

758 Capitalized Technology Software - Original

4,000.00

Total Property

\$4,000.00

Total 2700 Student Transportation Services

\$63,928.51

\$611,680.96

General Fund (10)

2710 Supervision of Student Transportation Services

Elementary

Secondary

Federal

Total

100 Personnel Services – Salaries

100 Personnel Services – Salaries

5,800.06

Total Personnel Services – Salaries

\$5,800.06

200 Personnel Services – Employee Benefits

210 Group Insurance – Contracted Provider

2,443.95

220 Social Security Contributions

443.56

230 PSERS Retirement Contributions

1,939.07

250 Unemployment Compensation

0.76

260 Workers' Compensation

31.56

Total Personnel Services – Employee Benefits

\$4,858.90

Total 2710 Supervision of Student Transportation Services

\$10,658.96

General Fund (10)

2711 Supervision of Student Transportation Services – Head of Component

Elementary

Secondary

Federal

Total

100 Personnel Services – Salaries

100 Personnel Services – Salaries

5,800.06

Total Personnel Services – Salaries

\$5,800.06

200 Personnel Services – Employee Benefits

210 Group Insurance – Contracted Provider

2,443.95

220 Social Security Contributions

443.56

230 PSERS Retirement Contributions

1,939.07

250 Unemployment Compensation

0.76

260 Workers' Compensation

31.56

Total Personnel Services – Employee Benefits

\$4,858.90

Total 2711 Supervision of Student Transportation Services – Head of Component

\$10,658.96

General Fund (10)

	<u>Elementary</u>	<u>Secondary</u>	<u>Federal</u>	<u>Total</u>
2720 Vehicle Operation Services				
500 Other Purchased Services				
513 Contracted Carriers			63,928.51	596,539.04
Total Other Purchased Services			\$63,928.51	\$596,539.04
600 Supplies				
610 General Supplies				482.96
Total Supplies				\$482.96
700 Property				
758 Capitalized Technology Software - Original				4,000.00
Total Property				\$4,000.00
Total 2720 Vehicle Operation Services			\$63,928.51	\$601,022.00

General Fund (10)

	<u>Elementary</u>	<u>Secondary</u>	<u>Federal</u>	<u>Total</u>
2800 Support Services – Central				
100 Personnel Services – Salaries				
100 Personnel Services – Salaries			5,999.76	115,280.42
Total Personnel Services – Salaries			\$5,999.76	\$115,280.42
200 Personnel Services – Employee Benefits				
210 Group Insurance – Contracted Provider				48,976.32
220 Social Security Contributions			458.64	8,829.56
230 PSERS Retirement Contributions			2,005.64	38,538.18
240 Tuition Reimbursement				1,624.00
250 Unemployment Compensation			0.82	15.57
260 Workers' Compensation				558.06
Total Personnel Services – Employee Benefits			\$2,465.10	\$98,541.69
300 Purchased Professional and Technical Services				
329 Professional Educational Services – Other				281.25
360 Employee Training and Development Services				3,129.00
Total Purchased Professional and Technical Services				\$3,410.25
400 Purchased Property Services				
430 Repairs and Maintenance Services				1,230.00
Total Purchased Property Services				\$1,230.00
500 Other Purchased Services				
580 Travel				1,905.23
Total Other Purchased Services				\$1,905.23
600 Supplies				
610 General Supplies				23,036.81
640 Books and Periodicals				2,499.98
650 Supplies & Fees – Technology Related				(1,275.00)
Total Supplies				\$24,261.79
700 Property				
762 Capitalized Equipment - Replacement				2,795.00
766 Capitalized Technology Equipment – Replacement				54,836.65
Total Property				\$57,631.65
Total 2800 Support Services – Central			\$8,464.86	\$302,261.03

General Fund (10)

2830 Staff Services

Elementary

Secondary

Federal

Total

200 Personnel Services – Employee Benefits

240 Tuition Reimbursement

1,624.00

Total Personnel Services – Employee Benefits

\$1,624.00

300 Purchased Professional and Technical Services

360 Employee Training and Development Services

3,129.00

Total Purchased Professional and Technical Services

\$3,129.00

500 Other Purchased Services

580 Travel

1,128.61

Total Other Purchased Services

\$1,128.61

Total 2830 Staff Services

\$5,881.61

General Fund (10)

	<u>Elementary</u>	<u>Secondary</u>	<u>Federal</u>	<u>Total</u>
2834 Staff Development Services – Non-Instructional, Certified Staff Only				
200 Personnel Services – Employee Benefits				
240 Tuition Reimbursement				424.00
Total Personnel Services – Employee Benefits				\$424.00
300 Purchased Professional and Technical Services				
360 Employee Training and Development Services				2,160.00
Total Purchased Professional and Technical Services				\$2,160.00
500 Other Purchased Services				
580 Travel				447.46
Total Other Purchased Services				\$447.46
Total 2834 Staff Development Services – Non-Instructional, Certified Staff Only				\$3,031.46

General Fund (10)

	<u>Elementary</u>	<u>Secondary</u>	<u>Federal</u>	<u>Total</u>
2836 Staff Development Services – Non-Instructional, Non-Certified Staff Only				
200 Personnel Services – Employee Benefits				
240 Tuition Reimbursement				1,200.00
Total Personnel Services – Employee Benefits				\$1,200.00
300 Purchased Professional and Technical Services				
360 Employee Training and Development Services				969.00
Total Purchased Professional and Technical Services				\$969.00
500 Other Purchased Services				
580 Travel				681.15
Total Other Purchased Services				\$681.15
Total 2836 Staff Development Services – Non-Instructional, Non-Certified Staff Only				\$2,850.15

General Fund (10)

	<u>Elementary</u>	<u>Secondary</u>	<u>Federal</u>	<u>Total</u>
2840 Data Processing Services				
100 Personnel Services – Salaries				
100 Personnel Services – Salaries				109,280.66
Total Personnel Services – Salaries				\$109,280.66
200 Personnel Services – Employee Benefits				
210 Group Insurance – Contracted Provider				48,976.32
220 Social Security Contributions				8,370.92
230 PSERS Retirement Contributions				36,532.54
250 Unemployment Compensation				14.75
260 Workers' Compensation				558.06
Total Personnel Services – Employee Benefits				\$94,452.59
300 Purchased Professional and Technical Services				
329 Professional Educational Services – Other				281.25
Total Purchased Professional and Technical Services				\$281.25
400 Purchased Property Services				
430 Repairs and Maintenance Services				1,230.00
Total Purchased Property Services				\$1,230.00
500 Other Purchased Services				
580 Travel				776.62
Total Other Purchased Services				\$776.62
600 Supplies				
610 General Supplies				23,036.81
640 Books and Periodicals				2,499.98
650 Supplies & Fees – Technology Related				(1,275.00)
Total Supplies				\$24,261.79
700 Property				
762 Capitalized Equipment - Replacement				2,795.00
766 Capitalized Technology Equipment – Replacement				54,836.65
Total Property				\$57,631.65
Total 2840 Data Processing Services				\$287,914.56

General Fund (10)

2850 State and Federal Agency Liaison Services

Elementary

Secondary

Federal

Total

100 Personnel Services – Salaries

100 Personnel Services – Salaries

5,999.76

5,999.76

Total Personnel Services – Salaries

\$5,999.76

\$5,999.76

200 Personnel Services – Employee Benefits

220 Social Security Contributions

458.64

458.64

230 PSERS Retirement Contributions

2,005.64

2,005.64

250 Unemployment Compensation

0.82

0.82

Total Personnel Services – Employee Benefits

\$2,465.10

\$2,465.10

Total 2850 State and Federal Agency Liaison Services

\$8,464.86

\$8,464.86

LEA : 106169003 Union SD

Printed 10/23/2019 9:16:45 AM

General Fund (10)

2900 Other Support Services

Elementary

Secondary

Federal

Total

500 Other Purchased Services

595 IU Payments By Withholding

4,730.30

Total Other Purchased Services

\$4,730.30

Total 2900 Other Support Services

\$4,730.30

General Fund (10)

2910 Support Services Not Listed Elsewhere In the 2000 Series

Elementary

Secondary

Federal

Total

500 Other Purchased Services

595 IU Payments By Withholding

4,730.30

Total Other Purchased Services

\$4,730.30

Total 2910 Support Services Not Listed Elsewhere In the 2000 Series

\$4,730.30

General Fund (10)

3000 Operation of Non-Instructional Services

Total

100 Personnel Services – Salaries

100 Personnel Services – Salaries 90,649.50

Total Personnel Services – Salaries \$90,649.50

200 Personnel Services – Employee Benefits

220 Social Security Contributions 6,741.56

230 PSERS Retirement Contributions 25,001.92

250 Unemployment Compensation 38.68

260 Workers' Compensation 155.30

Total Personnel Services – Employee Benefits \$31,937.46

300 Purchased Professional and Technical Services

329 Professional Educational Services – Other 136.00

330 Other Professional Services 58,209.63

Total Purchased Professional and Technical Services \$58,345.63

400 Purchased Property Services

430 Repairs and Maintenance Services 9,141.69

Total Purchased Property Services \$9,141.69

500 Other Purchased Services

510 Student Transportation Services 34,995.46

520 Insurance – General 5,740.00

580 Travel 8,903.94

Total Other Purchased Services \$49,639.40

600 Supplies

610 General Supplies 27,018.47

620 Energy 1,027.85

640 Books and Periodicals 2,700.00

Total Supplies \$30,746.32

700 Property

756 Capitalized Technology Equipment – Original 758.00

762 Capitalized Equipment - Replacement 3,928.85

766 Capitalized Technology Equipment – Replacement 1,118.00

Total Property \$5,804.85

800 Other Objects

810 Dues and Fees 9,336.68

860 Grants To Municipal and Community Service Organizations 450.00

Total Other Objects \$9,786.68

Total 3000 Operation of Non-Instructional Services \$286,051.53

General Fund (10)

3200 Student Activities

Elementary

Secondary

Federal

Total

100 Personnel Services – Salaries

100 Personnel Services – Salaries

82,212.00

Total Personnel Services – Salaries

\$82,212.00

200 Personnel Services – Employee Benefits

220 Social Security Contributions

6,096.00

230 PSERS Retirement Contributions

24,997.74

250 Unemployment Compensation

32.67

260 Workers' Compensation

155.30

Total Personnel Services – Employee Benefits

\$31,281.71

300 Purchased Professional and Technical Services

329 Professional Educational Services – Other

136.00

330 Other Professional Services

58,209.63

Total Purchased Professional and Technical Services

\$58,345.63

400 Purchased Property Services

430 Repairs and Maintenance Services

9,141.69

Total Purchased Property Services

\$9,141.69

500 Other Purchased Services

510 Student Transportation Services

34,995.46

520 Insurance – General

5,740.00

580 Travel

3,113.87

Total Other Purchased Services

\$43,849.33

600 Supplies

610 General Supplies

25,832.79

620 Energy

1,027.85

640 Books and Periodicals

2,700.00

Total Supplies

\$29,560.64

700 Property

756 Capitalized Technology Equipment – Original

758.00

762 Capitalized Equipment - Replacement

3,928.85

766 Capitalized Technology Equipment – Replacement

1,118.00

Total Property

\$5,804.85

800 Other Objects

810 Dues and Fees

9,336.68

Total Other Objects

\$9,336.68

Total 3200 Student Activities

\$269,532.53

General Fund (10)

	<u>Elementary</u>	<u>Secondary</u>	<u>Federal</u>	<u>Total</u>
3300 Community Services				
100 Personnel Services – Salaries				
100 Personnel Services – Salaries				8,437.50
Total Personnel Services – Salaries				\$8,437.50
200 Personnel Services – Employee Benefits				
220 Social Security Contributions				645.56
230 PSERS Retirement Contributions				4.18
250 Unemployment Compensation				6.01
Total Personnel Services – Employee Benefits				\$655.75
500 Other Purchased Services				
580 Travel			5,790.07	5,790.07
Total Other Purchased Services			\$5,790.07	\$5,790.07
600 Supplies				
610 General Supplies			1,185.68	1,185.68
Total Supplies			\$1,185.68	\$1,185.68
800 Other Objects				
860 Grants To Municipal and Community Service Organizations				450.00
Total Other Objects				\$450.00
Total 3300 Community Services			\$6,975.75	\$16,519.00

General Fund (10)

5000 Other Expenditures and Financing Uses

Total

800 Other Objects

830 Interest 35,485.65

Total Other Objects \$35,485.65

900 Other Uses of Funds

910 Redemption of Principal 302,320.00

939 Other Fund Transfers 103,898.81

Total Other Uses of Funds \$406,218.81

Total 5000 Other Expenditures and Financing Uses \$441,704.46

General Fund (10)

	<u>Elementary</u>	<u>Secondary</u>	<u>Federal</u>	<u>Total</u>
5100 Debt Service / Other Expenditures and Financing Uses				
800 Other Objects				
830 Interest				35,485.65
Total Other Objects				\$35,485.65
900 Other Uses of Funds				
910 Redemption of Principal				302,320.00
Total Other Uses of Funds				\$302,320.00
Total 5100 Debt Service / Other Expenditures and Financing Uses				\$337,805.65

General Fund (10)

	<u>Elementary</u>	<u>Secondary</u>	<u>Federal</u>	<u>Total</u>
5110 Debt Service				
800 Other Objects				
830 Interest				35,485.65
Total Other Objects				\$35,485.65
900 Other Uses of Funds				
910 Redemption of Principal				302,320.00
Total Other Uses of Funds				\$302,320.00
Total 5110 Debt Service				\$337,805.65

General Fund (10)

5200 Interfund Transfers – Out

Elementary

Secondary

Federal

Total

900 Other Uses of Funds

939 Other Fund Transfers

103,898.81

Total Other Uses of Funds

\$103,898.81

Total 5200 Interfund Transfers – Out

\$103,898.81

LEA : 106169003 Union SD

Printed 10/23/2019 9:17:00 AM

General Fund (10)

5250 Enterprise Fund Transfers

Elementary

Secondary

Federal

Total

900 Other Uses of Funds

939 Other Fund Transfers

103,898.81

Total Other Uses of Funds

\$103,898.81

Total 5250 Enterprise Fund Transfers

\$103,898.81

Other Capital Projects Fund (39)

2000 Support Services

700 Property

762 Capitalized Equipment - Replacement

Total

19,010.32

Total Property	\$19,010.32
Total 2000 Support Services	\$19,010.32

Other Capital Projects Fund (39)

2600 Operation and Maintenance of Plant Services

Elementary

Secondary

Federal

Total

700 Property

762 Capitalized Equipment - Replacement

19,010.32

Total Property

\$19,010.32

Total 2600 Operation and Maintenance of Plant Services

\$19,010.32

LEA : 106169003 Union SD

Printed 10/23/2019 9:16:49 AM

Other Capital Projects Fund (39)

2620 Operation of Buildings Services

Elementary

Secondary

Federal

Total

700 Property

762 Capitalized Equipment - Replacement

19,010.32

Total Property

\$19,010.32

Total 2620 Operation of Buildings Services

\$19,010.32

Other Capital Projects Fund (39)

4000 Facilities Acquisition, Construction and Improvement Services

Total

400 Purchased Property Services

450 Construction Services

135,202.00

Total Purchased Property Services

\$135,202.00

Total 4000 Facilities Acquisition, Construction and Improvement Services

\$135,202.00

LEA : 106169003 Union SD

Printed 10/23/2019 9:16:56 AM

Other Capital Projects Fund (39)

4600 Existing Building Improvement Services

Elementary

Secondary

Federal

Total

400 Purchased Property Services

450 Construction Services

135,202.00

Total Purchased Property Services

\$135,202.00

Total 4600 Existing Building Improvement Services

\$135,202.00

	<u>General Fund(10)</u>	<u>Public Purpose Trust(27)</u>	<u>Other Compt Approved (28)</u>	<u>Athletic / Activity(29)</u>	<u>Capital Reserve (690. 1850)(31)</u>
1000 Instruction					
1100 Regular Programs - Elementary / Secondary	5,142,389.62				
1200 Special Programs - Elementary / Secondary	1,353,959.18				
1300 Vocational Education	284,444.22				
1400 Other Instructional Programs - Elementary / Secondary	9,996.73				
Total Instruction	\$6,790,789.75				
2000 Support Services					
2100 Support Services - Students	477,612.90				
2200 Support Services - Instructional Staff	106,067.75				
2300 Support Services - Administration	904,947.79				
2400 Support Services - Pupil Health	157,622.68				
2500 Support Services - Business	187,351.73				
2600 Operation and Maintenance of Plant Services	1,393,353.79				
2700 Student Transportation Services	611,680.96				
2800 Support Services - Central	302,261.03				
2900 Other Support Services	4,730.30				
Total Support Services	\$4,145,628.93				
3000 Operation of Non-Instructional Services					
3200 Student Activities	269,532.53				
3300 Community Services	16,519.00				
Total Operation of Non-Instructional Services	\$286,051.53				
4000 Facilities Acquisition, Construction and Improvement Services					
4600 Existing Building Improvement Services					
Total Facilities Acquisition, Construction and Improvement Services					
5000 Other Expenditures and Financing Uses					
5100 Debt Service / Other Expenditures and Financing Uses	337,805.65				
5200 Interfund Transfers - Out	103,898.81				
Total Other Expenditures and Financing Uses	\$441,704.46				
TOTAL ACTUAL EXPENDITURES & OTHER FINANCING USES	\$11,664,174.67				

	<u>Capital Reserve (1431)(32)</u>	<u>Other Capital Projects Fund(39)</u>	<u>Debt Service(40)</u>	<u>Permanent(90)</u>	<u>Total</u>
1000 Instruction					
1100 Regular Programs - Elementary / Secondary					5,142,389.62
1200 Special Programs - Elementary / Secondary					1,353,959.18
1300 Vocational Education					284,444.22
1400 Other Instructional Programs - Elementary / Secondary					9,996.73
Total Instruction					\$6,790,789.75
2000 Support Services					
2100 Support Services - Students					477,612.90
2200 Support Services - Instructional Staff					106,067.75
2300 Support Services - Administration					904,947.79
2400 Support Services - Pupil Health					157,622.68
2500 Support Services - Business					187,351.73
2600 Operation and Maintenance of Plant Services		19,010.32			1,412,364.11
2700 Student Transportation Services					611,680.96
2800 Support Services - Central					302,261.03
2900 Other Support Services					4,730.30
Total Support Services		\$19,010.32			\$4,164,639.25
3000 Operation of Non-Instructional Services					
3200 Student Activities					269,532.53
3300 Community Services					16,519.00
Total Operation of Non-Instructional Services					\$286,051.53
4000 Facilities Acquisition, Construction and Improvement Services					
4600 Existing Building Improvement Services			135,202.00		135,202.00
Total Facilities Acquisition, Construction and Improvement Services			\$135,202.00		\$135,202.00
5000 Other Expenditures and Financing Uses					
5100 Debt Service / Other Expenditures and Financing Uses					337,805.65
5200 Interfund Transfers - Out					103,898.81
Total Other Expenditures and Financing Uses					\$441,704.46
TOTAL ACTUAL EXPENDITURES & OTHER FINANCING USES		\$154,212.32			\$11,818,386.99

LEA : 106169003 Union SD

Printed 10/23/2019 9:17:23 AM

PSERS Salary Data (Salary Data should relate to the General Fund only)

Amount Description	Amount
Total Salary Base for salaries subject to PSERS withholding	4,913,271.76
Total Federally Funded salaries subject to PSERS withholding	115,161.00
	<hr/>

Title I Expenditure Data

Amount Description	Amount
Expenditures Funded with Current Title I Funds	167,535.58
Expenditures Funded with Carry over Title I Funds	
Total Title I Expenditure Data	<hr/> \$167,535.58 <hr/>

Benefits for Staff Relative to Collective Bargaining Agreements

	OBJECT	COVERED	NOT COVERED	TOTAL
10 General Fund	No Self Insurance data to report			
	211 Medical Insurance	1,176,877.09	253,412.18	1,430,289.27
	212 Dental Insurance	49,582.36	11,342.52	60,924.88
	215 Eye Care Insurance	10,500.90	2,944.04	13,444.94
	216 Prescription Insurance			
	271 Self-Insurance Medical Benefits			
	272 Self-Insurance Dental Benefits			
	275 Self-Insurance Eye Care Benefits			
	276 Self-Insurance Prescription Benefits			
	FUND TOTAL	\$1,236,960.35	\$267,698.74	\$1,504,659.09
50 Enterprise Fund	No Self Insurance data to report			
	211 Medical Insurance	61,098.49	23,418.24	84,516.73
	212 Dental Insurance	1,922.28	733.92	2,656.20
	215 Eye Care Insurance	713.20	163.80	877.00
	216 Prescription Insurance			
	271 Self-Insurance Medical Benefits			
	272 Self-Insurance Dental Benefits			
	275 Self-Insurance Eye Care Benefits			
	276 Self-Insurance Prescription Benefits			
	FUND TOTAL	\$63,733.97	\$24,315.96	\$88,049.93
60 Internal Service Fund	No Self Insurance data to report			
	211 Medical Insurance			
	212 Dental Insurance			
	215 Eye Care Insurance			
	216 Prescription Insurance			
	271 Self-Insurance Medical Benefits			
	272 Self-Insurance Dental Benefits			
	275 Self-Insurance Eye Care Benefits			
	276 Self-Insurance Prescription Benefits			
	FUND TOTAL			
Total of All Funds		\$1,300,694.32	\$292,014.70	\$1,592,709.02

LEA : 106169003 Union SD

Printed 10/23/2019 9:17:27 AM

Function	Special Education (Prior Year)	Nonspecial Education (Prior Year)	Total (Prior Year)	Special Education (Current Year)	Nonspecial Education (Current Year)	Total (Current Year)
2120 Guidance Services	41,989.85	179,009.35	220,999.20	49,064.55	183,992.06	233,056.61
2140 Psychological Services	104,006.70	11,556.30	115,563.00	78,300.66	24,795.21	103,095.87
2150 Speech Pathology and Audiology Services	61,716.97		61,716.97	71,102.36		71,102.36
2160 Social Work Services						
2260 Instruction and Curriculum Development Services						
2350 Legal and Accounting Services	1,980.30	31,024.68	33,004.98	2,682.99	16,481.22	19,164.21
2420 Medical Services						
2440 Nursing Services	27,836.71	118,672.29	146,509.00	33,183.72	124,438.96	157,622.68
2700 Student Transportation Services	142,536.25	424,297.75	566,834.00	89,647.60	522,033.36	611,680.96
Total	\$380,066.78	\$764,560.37	\$1,144,627.15	\$323,981.88	\$871,740.81	\$1,195,722.69

(PRINCIPAL AMOUNTS ONLY)

GOVERNMENTAL FUNDS/ ACTIVITIES

	Short-Term Borrowing	General Obligation Bonds/Notes	Authority Building Obligations	Other Long-Term Debt	Other Post-Employment Benefits (OPEB)	Compensated Absences	Net Pension Liability	Total
1. Debt at Beginning of Fiscal Year		2,186,270.00			1,598,463.00	72,975.00	17,335,000.00	21,192,708.00
2. Additional Debt Incurred During Year					1,833,522.00			1,833,522.00
3. Retirements and Repayments		302,320.00				4,200.00	293,000.00	599,520.00
4. Debt at End of Fiscal Year		1,883,950.00			3,431,985.00	68,775.00	17,042,000.00	22,426,710.00
5. Accreted Interest at End Of Fiscal Year								
6. Total Debt and Accreted Interest		1,883,950.00			3,431,985.00	68,775.00	17,042,000.00	22,426,710.00
7. Current Portion P&I - Due within 1 year		345,248.00						345,248.00
8. Interest Paid during current fiscal year		35,574.00						35,574.00

(PRINCIPAL AMOUNTS ONLY)

PROPRIETARY FUNDS

- 1. Debt at Beginning of Fiscal Year
- 2. Additional Debt Incurred During Year
- 3. Retirements and Repayments
- 4. Debt at End of Fiscal Year
- 5. Accreted Interest at End Of Fiscal Year
- 6. Total Debt and Accreted Interest
- 7. Current Portion P&I - Due within 1 year
- 8. Interest Paid during current fiscal year

Total Principal and Interest Payments Made by Your School - All Funds

Function	Fund		Principal (910)	Principal (920)	Interest (830)	Total (Principal +Interest)	Misc Other Uses (990)
5110	10	General Fund	302,320.00		35,485.65	337,805.65	
5110	20	Special Revenue Funds					
5110	30	Capital Projects Funds					
5110	40	Debt Service Fund					
5110	90	Permanent Fund					
5120	10	General Fund					
5120	20	Special Revenue Funds					
5120	30	Capital Projects Funds					
5120	40	Debt Service Fund					

Total Debt Payments - Governmental Funds			\$302,320.00		\$35,485.65	\$337,805.65	
---	--	--	---------------------	--	--------------------	---------------------	--

Function	Fund		Principal (910)	Principal (920)	Interest (830)	Total (Principal +Interest)
5110	50	Enterprise Fund				
5110	60	Internal Service Fund				
5120	50	Enterprise Fund				
5120	60	Internal Service Fund				

Total Debt Payments - Proprietary Funds						
--	--	--	--	--	--	--

Debt Details
Governmental Funds/ Activities

Debt Category	Debt Issue Date (MM/YYYY)	Principal Amounts Only			Debt at End of Fiscal Year	Current Portion Due Within One Year (Principal and Interest)	Interest Paid During Fiscal Year
		Debt at Beginning of Fiscal Year	Additions	Reductions / Repayments			
General Obligation Bonds/Notes – CIB	06/2016	2,186,270.00		302,320.00	1,883,950.00	345,248.00	35,574.00
Compensated Absences		72,975.00		4,200.00	68,775.00		
Other Post-Employment Benefits (OPEB)		1,598,463.00	1,833,522.00		3,431,985.00		
Net Pension Liability		17,335,000.00		293,000.00	17,042,000.00		
Totals for Debt Entered:		\$21,192,708.00	\$1,833,522.00	\$599,520.00	\$22,426,710.00	\$345,248.00	\$35,574.00

General Fund (10)

Section 1: Tuition/Purchased Services as Reported within Expenditure Detail

	Amount
Tuition Reported in General Fund Expenditures 1000-560	877,129.10
Purchased Services in General Fund Expenditures 1000-594 and 1000-597	

Section 1 Total	\$877,129.10
------------------------	---------------------

Section 2: Tuition Paid to Institution Types During Fiscal Year

	Tuition Paid For Nonspecial Education	Tuition Paid For Special Education	Total
1 1306 Institutions			
2 Institutionalized Children's Programs			
3 Juveniles Incarcerated in Adult Facilities			
4 Residential Treatment Facilities			
5 Other Local Education Agencies	44,005.05		44,005.05
6 Brick and Mortar Charter Schools			
7 Cyber Charter Schools	243,420.39	135,167.57	378,587.96
8 Career and Technology Centers	219,774.00		219,774.00
9 Approved Private Schools			
10 PA Chartered Schools for the Deaf and Blind			
11 Private Residential Rehabilitative Institutions	26,746.37	14,492.63	41,239.00
12 Juvenile Detention Centers			
13 Special Program Jointures			
14 Other Tuition Not Included Elsewhere In This Section	20,435.69	173,087.40	193,523.09
Section 2 Total	\$554,381.50	\$322,747.60	\$877,129.10

1 .	<u>Student Transportation Services for Educational Field Trips</u>	1,030.49
2 .	<u>Student Transportation Services for Student Activities</u>	978.91
3 .	<u>Rental of Vehicles for Student Transportation Services</u>	
4 .	<u>Capital Reserve Funds</u>	

Include only district-owned transportation expenditures paid from State or local money.
 DO NOT include federal expenditures or payments to contract service providers.
 Contracted transportation services should not be recorded on this schedule.

Food Service / Cafeteria Operations Fund (51)

3000 Operation of Non-Instructional Services

Total

100 Personnel Services – Salaries

100 Personnel Services – Salaries 179,906.22

Total Personnel Services – Salaries \$179,906.22

200 Personnel Services – Employee Benefits

210 Group Insurance – Contracted Provider 88,318.49

220 Social Security Contributions 6,209.03

230 PSERS Retirement Contributions 26,875.97

250 Unemployment Compensation 77.31

260 Workers' Compensation 71.54

Total Personnel Services – Employee Benefits \$121,552.34

400 Purchased Property Services

430 Repairs and Maintenance Services 5,436.22

Total Purchased Property Services \$5,436.22

500 Other Purchased Services

580 Travel 1,113.77

Total Other Purchased Services \$1,113.77

600 Supplies

610 General Supplies 12,599.34

630 Food 143,959.66

640 Books and Periodicals 428.00

Total Supplies \$156,987.00

700 Property

740 Depreciation 4,982.00

Total Property \$4,982.00

800 Other Objects

810 Dues and Fees 749.00

Total Other Objects \$749.00

Total 3000 Operation of Non-Instructional Services \$470,726.55

Food Service / Cafeteria Operations Fund (51)

3100 Food Services

100 Personnel Services – Salaries

	<u>Elementary</u>	<u>Secondary</u>	<u>Federal</u>	<u>Total</u>
100 Personnel Services – Salaries			98,832.72	179,906.22

Total Personnel Services – Salaries			\$98,832.72	\$179,906.22
--	--	--	--------------------	---------------------

200 Personnel Services – Employee Benefits

210 Group Insurance – Contracted Provider			48,518.37	88,318.49
---	--	--	-----------	-----------

220 Social Security Contributions			3,410.97	6,209.03
-----------------------------------	--	--	----------	----------

230 PSERS Retirement Contributions			14,764.50	26,875.97
------------------------------------	--	--	-----------	-----------

250 Unemployment Compensation			42.47	77.31
-------------------------------	--	--	-------	-------

260 Workers' Compensation			39.30	71.54
---------------------------	--	--	-------	-------

Total Personnel Services – Employee Benefits			\$66,775.61	\$121,552.34
---	--	--	--------------------	---------------------

400 Purchased Property Services

430 Repairs and Maintenance Services			2,986.42	5,436.22
--------------------------------------	--	--	----------	----------

Total Purchased Property Services			\$2,986.42	\$5,436.22
--	--	--	-------------------	-------------------

500 Other Purchased Services

580 Travel			611.86	1,113.77
------------	--	--	--------	----------

Total Other Purchased Services			\$611.86	\$1,113.77
---------------------------------------	--	--	-----------------	-------------------

600 Supplies

610 General Supplies			6,921.53	12,599.34
----------------------	--	--	----------	-----------

630 Food			79,085.23	143,959.66
----------	--	--	-----------	------------

640 Books and Periodicals			235.13	428.00
---------------------------	--	--	--------	--------

Total Supplies			\$86,241.89	\$156,987.00
-----------------------	--	--	--------------------	---------------------

700 Property

740 Depreciation				4,982.00
------------------	--	--	--	----------

Total Property				\$4,982.00
-----------------------	--	--	--	-------------------

800 Other Objects

810 Dues and Fees			411.47	749.00
-------------------	--	--	--------	--------

Total Other Objects			\$411.47	\$749.00
----------------------------	--	--	-----------------	-----------------

Total 3100 Food Services			\$255,859.97	\$470,726.55
---------------------------------	--	--	---------------------	---------------------

	<u>Food Service(51)</u>	<u>Child Care Operations(52)</u>	<u>Other Enterprise(58)</u>	<u>Internal Service(60)</u>	<u>Total</u>
3000 <u>Operation of Non-Instructional Services</u>					
3100 Food Services	470,726.55				470,726.55
Total Operation of Non-Instructional Services	\$470,726.55				\$470,726.55
TOTAL ACTUAL EXPENDITURES & OTHER FINANCING USES	\$470,726.55				\$470,726.55

LEA : 106169003 Union SD

Printed 10/23/2019 9:17:49 AM

Fund	School	School Number	Local Personnel	Local Nonpersonnel	State Personnel	State Nonpersonnel	Federal Personnel	Federal Nonpersonnel	Total	Explanation
10	Rimersburg El Sch	5033	237,260.16	202,977.78	819,779.64	701,327.42	63,585.87	99,203.71	2,124,134.58	
	Sligo El Sch	5034	193,003.07	165,115.52	666,862.86	570,506.01	51,724.94	80,698.85	1,727,911.25	
	Union HS	1501	383,476.88	338,492.40	1,324,986.67	1,169,556.57	78,021.85	121,726.07	3,416,260.44	
Total			813,740.11	706,585.70	2,811,629.17	2,441,390.00	193,332.66	301,628.63	7,268,306.27	